



DUAL-POLARIZATION DATA QUALITY UPDATE

18 November 2009



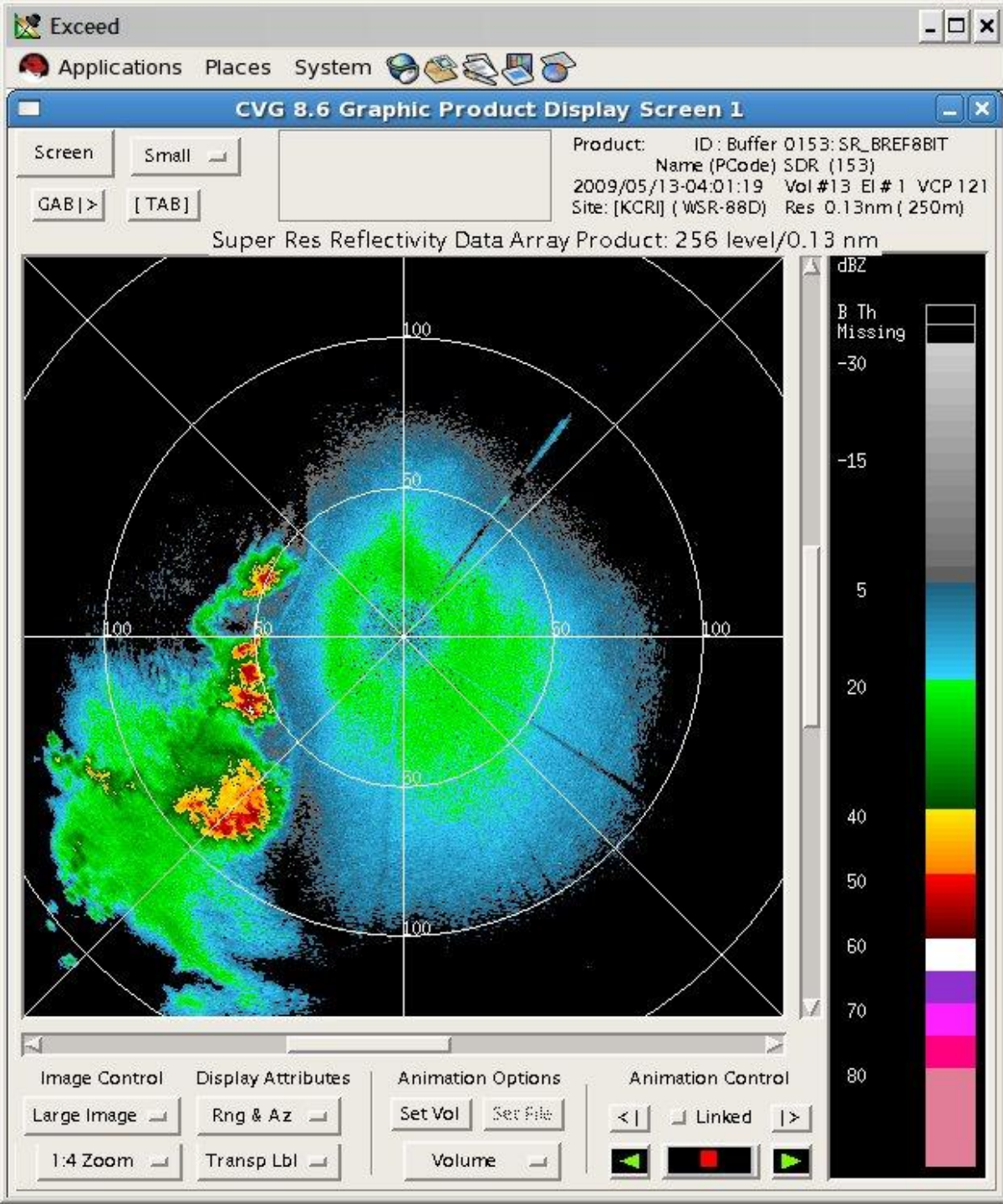
Outline

- **KOUN vs. KCRI: Spring/Summer 09**
- **KOUN vs. KCRI: After DP Conversion**
- **Quantitative Analysis of DP Coverage/Sensitivity**
- **Dual Pol Variable Evaluation**
- **Summary**



KOUN VS. KCRI

Spring-Summer 09



KCRI

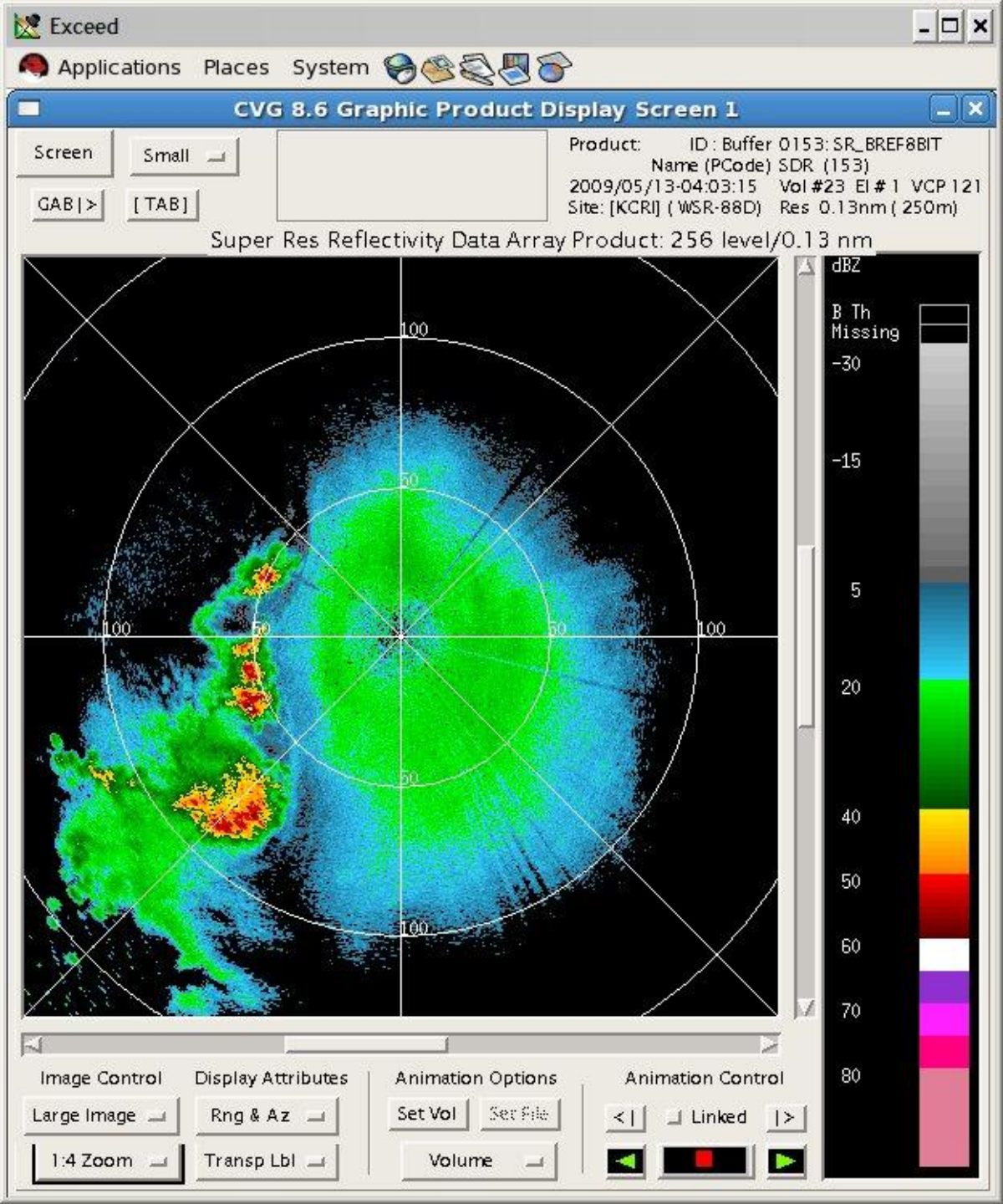
NOP4B11

VCP 121 T1

0401Z

13 May 09

**Clear Air w/storms
west to
southwest
Super Res**



KOUN

NOP4B11

VCP 121 T1

0401Z

13 May 09

**Clear Air w/storms
 west to southwest
 Super Res**

**Remember we noted
 cases this month
 w/KOUN greener in
 clear air 5**



KOUN VS. KCRI

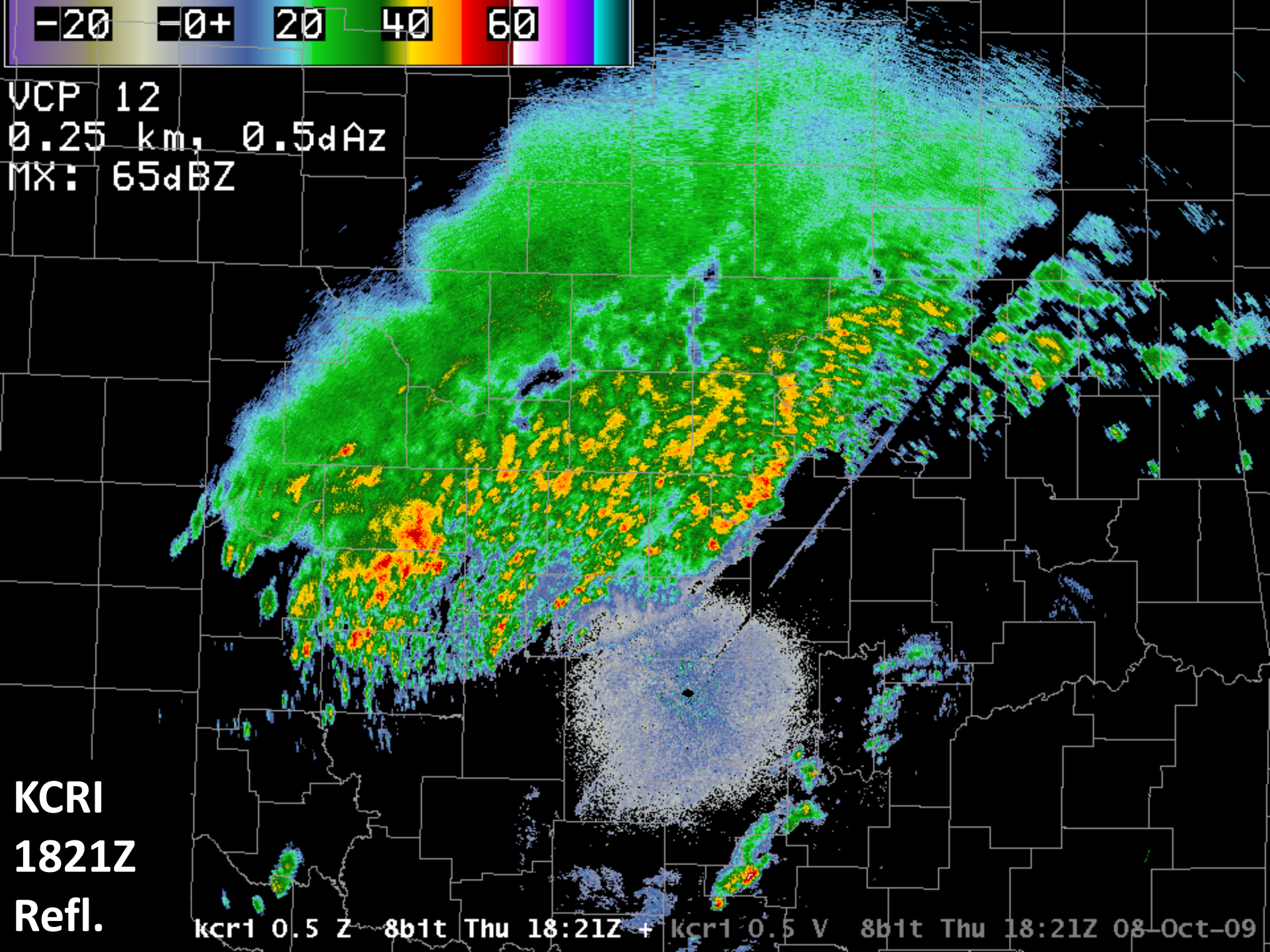
After Dual-Pol Conversion

-20 -0+ 20 40 60

VCP 12
0.25 km, 0.5dBz
MX: 65dBZ

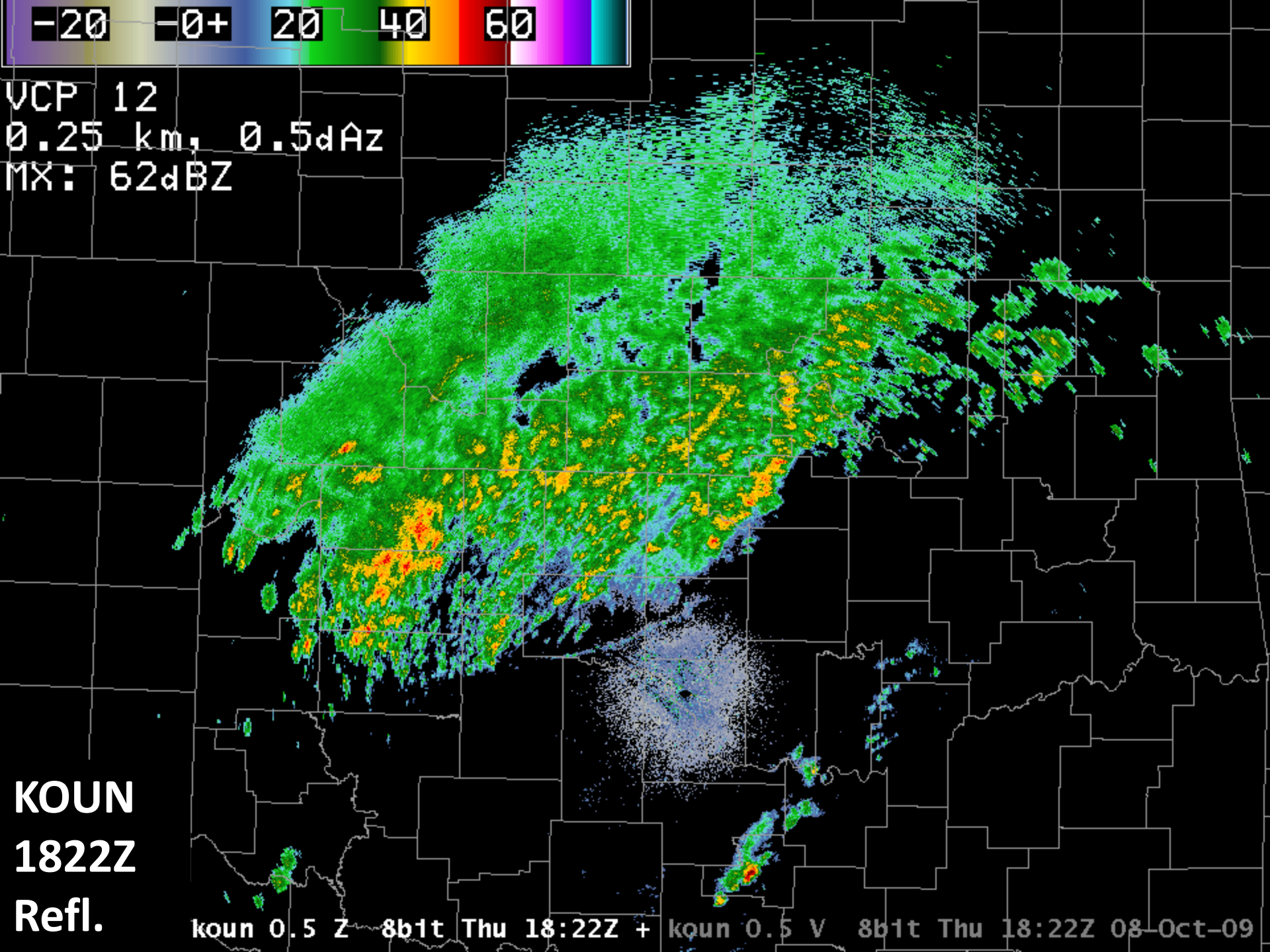
KCRI
1821Z
Refl.

kcr1 0.5 Z 8b1t Thu 18:21Z + kcr1 0.5 V 8b1t Thu 18:21Z 08-Oct-09





VCP 12
0.25 km, 0.5dBZ
MX: 62dBZ



KOUN
1822Z
Refl.

koun 0.5 Z 8b1t Thu 18:22Z + koun 0.5 V 8b1t Thu 18:22Z 08-Oct-09

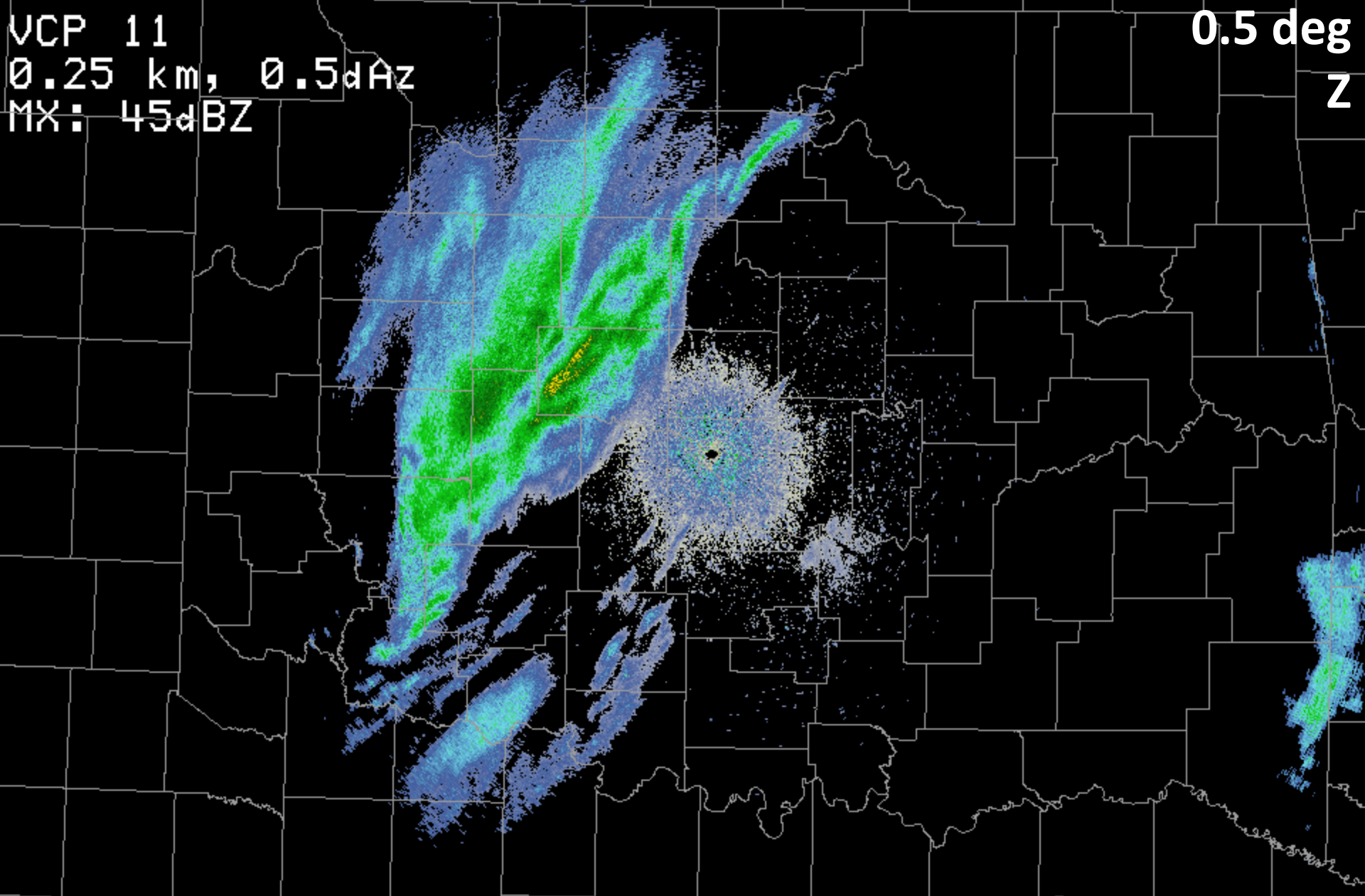


KCRI

0.5 deg

Z

VCP 11
0.25 km, 0.5dBZ
MX: 45dBZ



+

kcr1 0.5 Z 8bit Mon 06:51Z + kcr1 0.5 V 8bit Mon 06:51Z 16 Nov 09

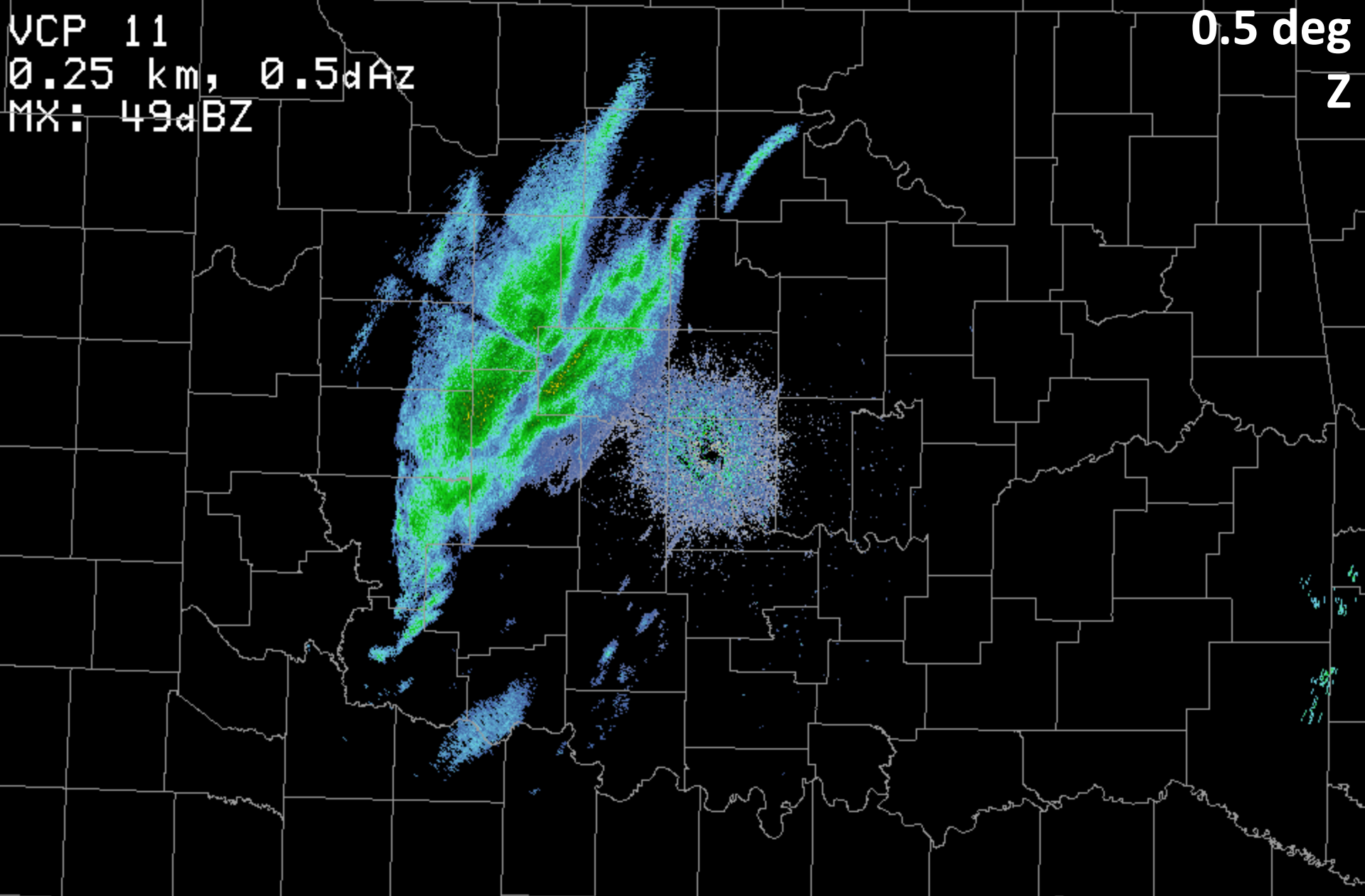


KOUN

0.5 deg

Z

VCP 11
0.25 km, 0.5dBZ
MX: 49dBZ



+

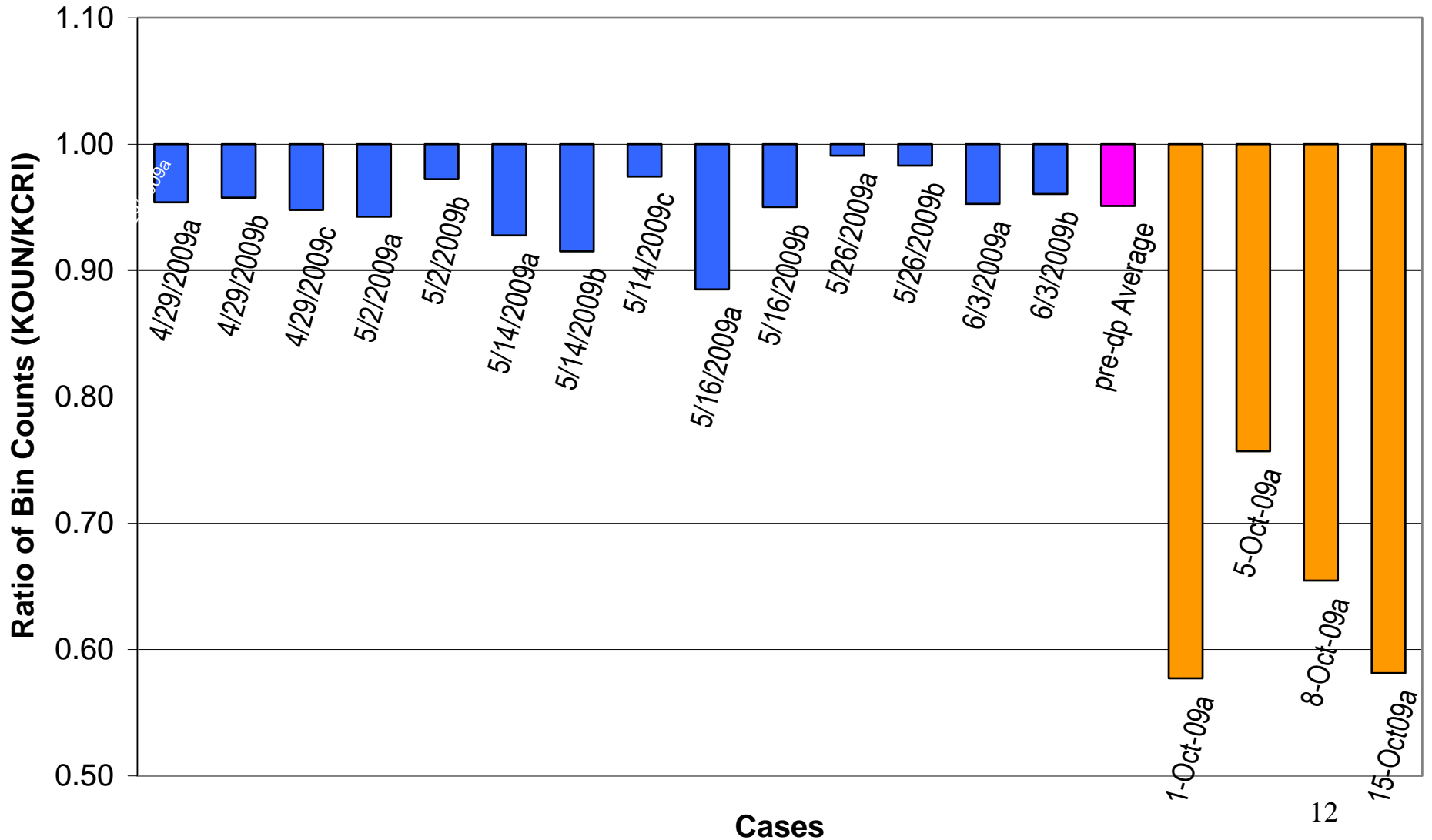
koun 0.5 Z 8bit Mon 06:50Z + koun 0.5 V 8bit Mon 06:50Z 16 Nov-09



Quantitative Analysis of Coverage / Sensitivity Before and After Dual Pol Conversion

KOUN vs KCRI E1 Bin Count Ratios

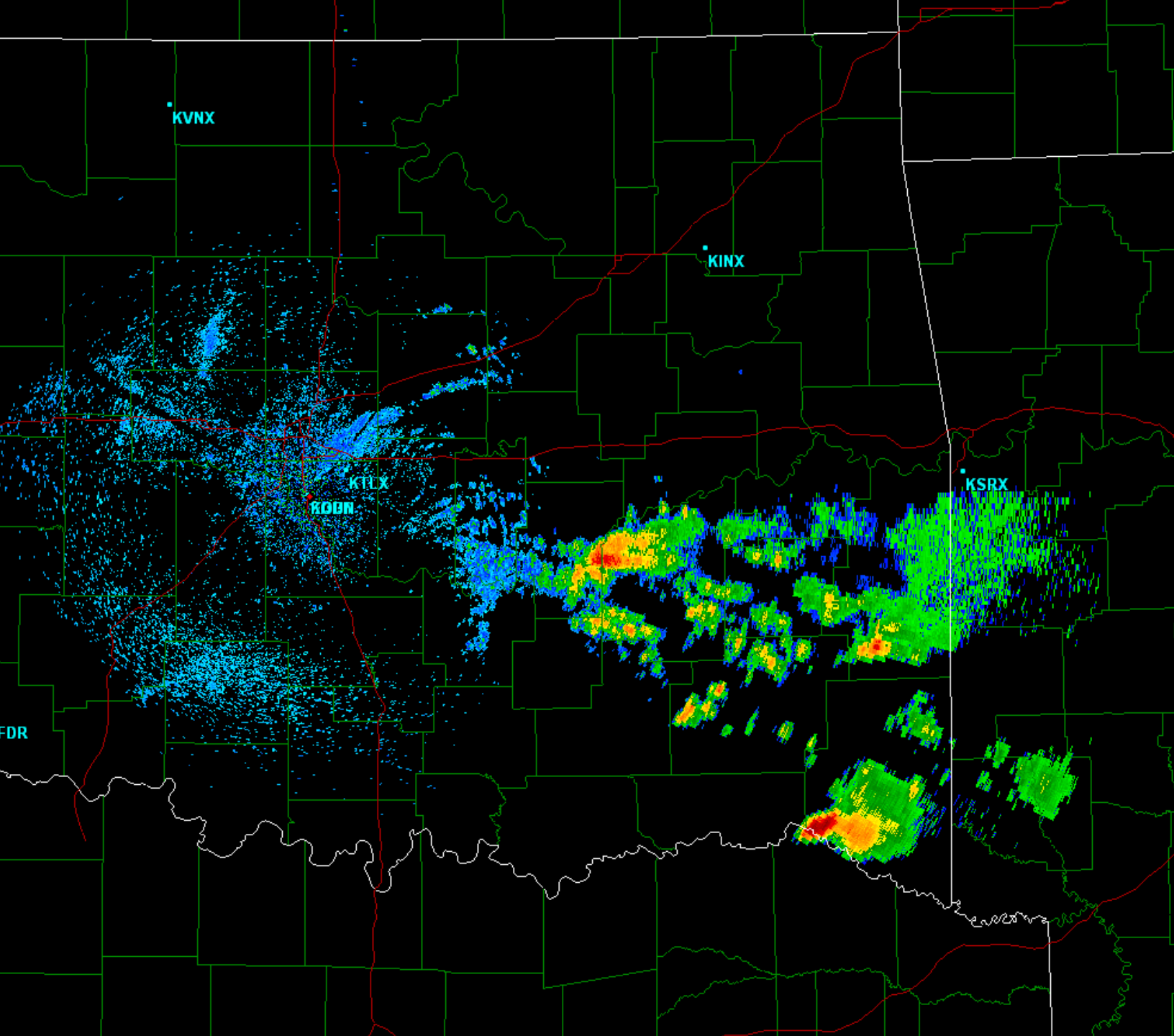
14 pre-dp Samples from 7 Cases; 4 post-dp Cases



Quantify the Coverage Difference Between KOUN and KCRI

- Recorded Level II data on KOUN/KCRI
 - provided KOUN data for comparison
- Recorded Level I data on KCRI
- Played the KCRI Level I data back
 - Adjusted the VCP defined SNR thresholds with each playback
 - +0 dB, +3 dB, +6 dB, +8 dB
- Compared played back data with KOUN

Site: KOUN
VST: 10/15/2009 08:32:06 UT
Prod: 10/15/2009 08:32:05 UT
VCP: 211
Tilt: 0.527°



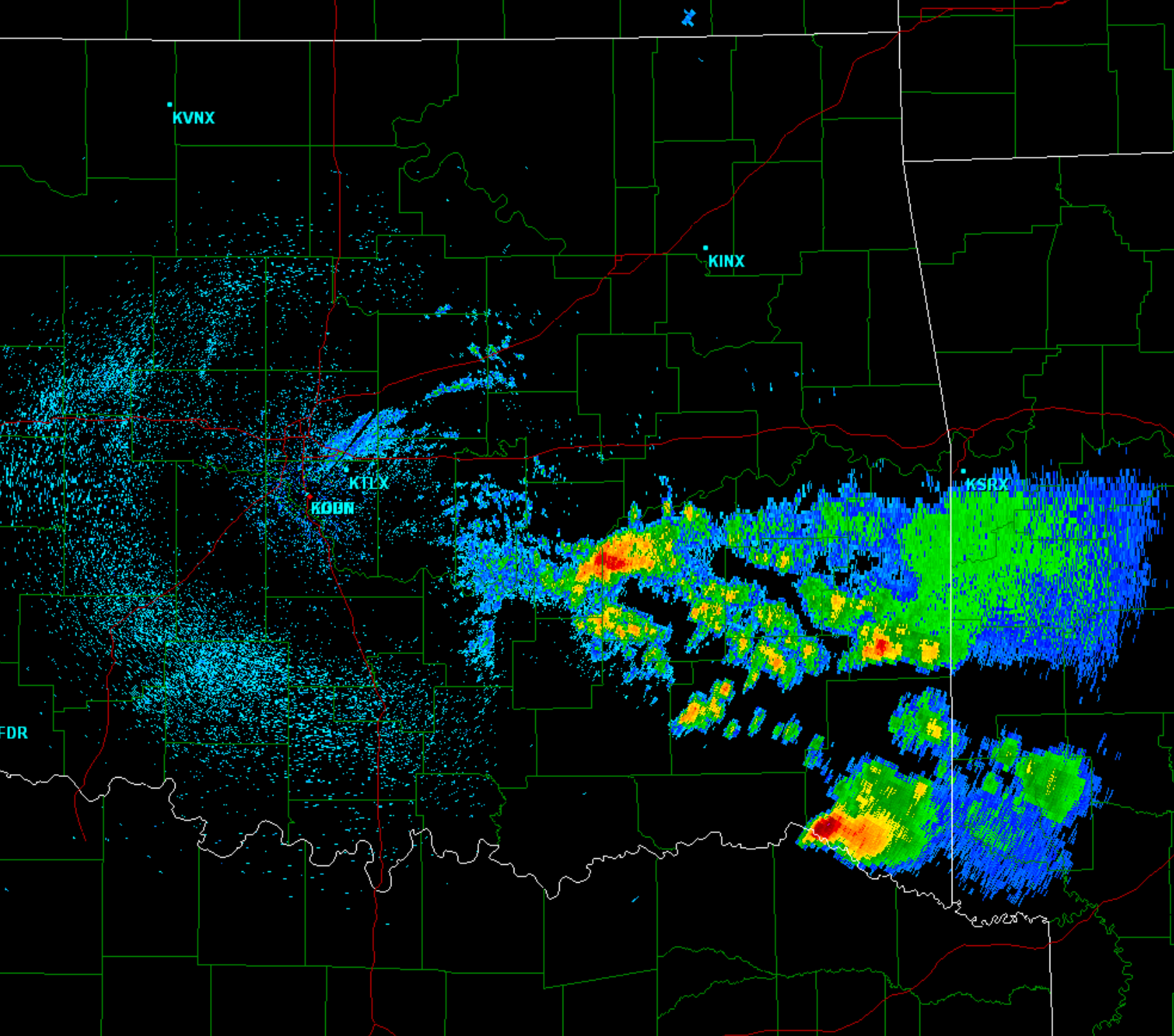
- Select Sweep:
- Base Reflectivity
 - Base Velocity
 - Storm Relative
 - Spectrum Width

- Select Tilt:
- | | | | |
|-------|-------|-------|-------|
| 0.5° | 0.5° | 1.5° | 1.5° |
| 2.5° | 3.4° | 4.4° | 5.3° |
| 6.3° | 7.5° | 8.7° | 10.0° |
| 12.0° | 14.1° | 16.7° | 19.0° |

- Warnings:
- Flash Flood
 - Severe Thunderstorm
 - Tornado

- Smoothing
- Dealias

KOUN



Site: KCRI
VST: 10/15/2009 13:46:18 UT
Prod: 10/15/2009 08:34:05 UT
VCP: 211
Tilt: 0.527°

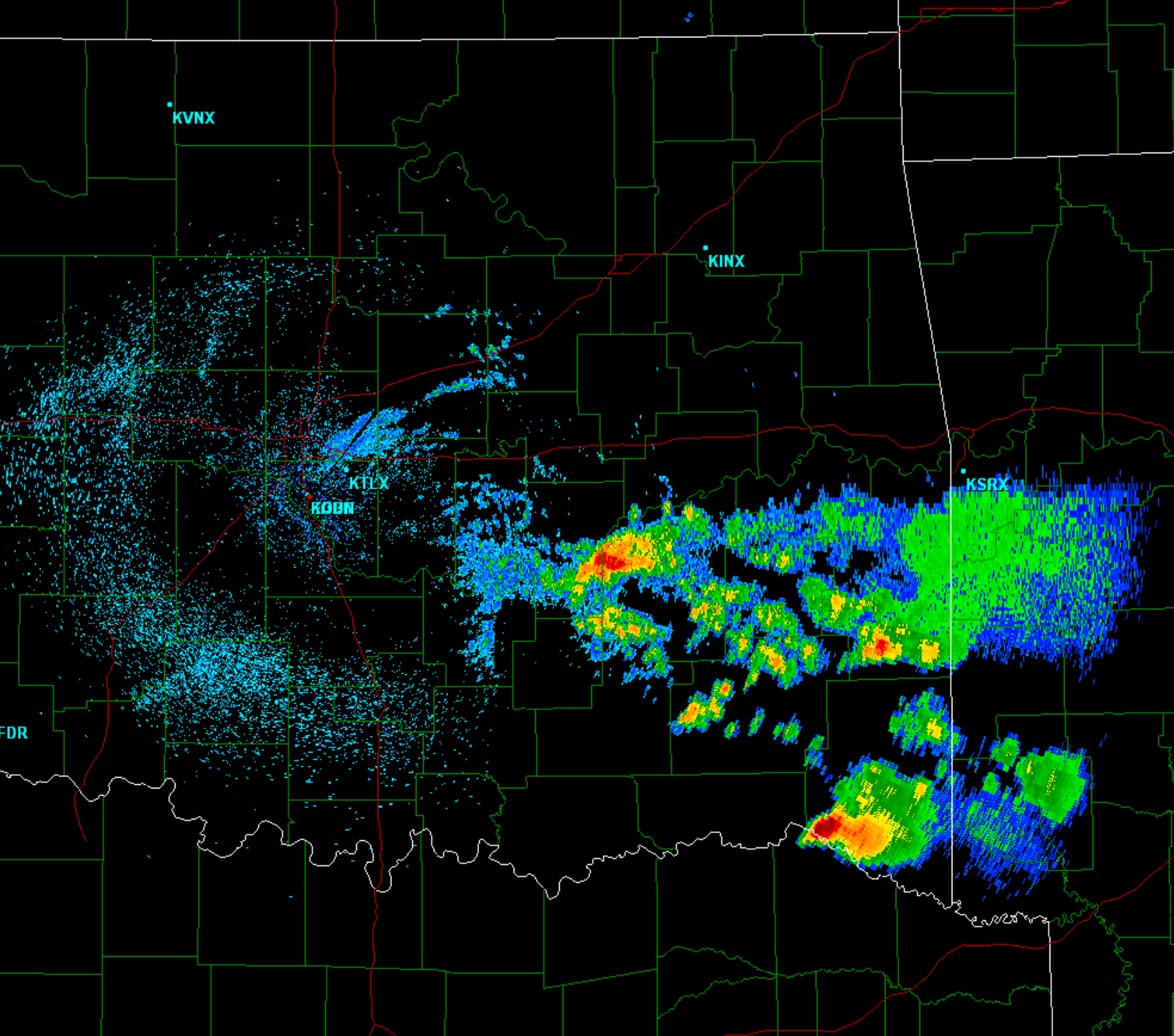
- Select Sweep:
- Base Reflectivity
 - Base Velocity
 - Storm Relative
 - Spectrum Width

- Select Tilt:
- | | | | |
|-------|-------|-------|-------|
| 0.5° | 0.5° | 1.4° | 1.4° |
| 2.5° | 3.4° | 4.4° | 5.3° |
| 6.2° | 7.5° | 8.7° | 10.0° |
| 12.0° | 14.0° | 16.7° | 19.0° |

- Warnings:
- Flash Flood
 - Severe Thunderstorm
 - Tornado

- Smoothing
- Dealias

KCRI
Th + 0dB



Site: KCRI
VST: 10/15/2009 13:51:22 UT
Prod: 10/15/2009 08:34:05 UT
VCP: 211
Tilt: 0.527°

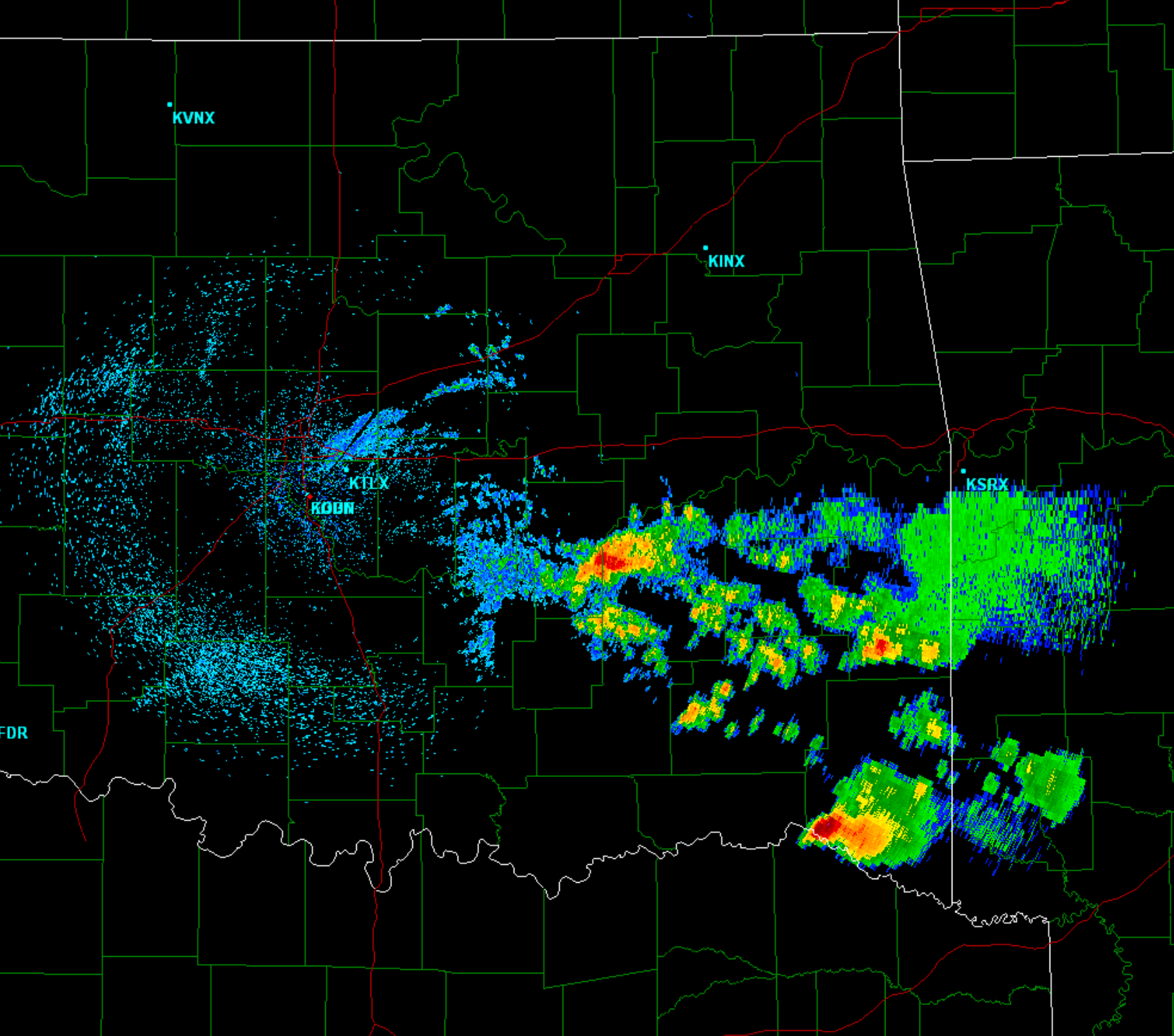
- Select Sweep:
- Base Reflectivity
 - Base Velocity
 - Storm Relative
 - Spectrum Width

- Select Tilt:
- | | | | |
|-------|-------|-------|-------|
| 0.5° | 0.5° | 1.4° | 1.4° |
| 2.5° | 3.4° | 4.4° | 5.3° |
| 6.2° | 7.5° | 8.7° | 10.0° |
| 12.0° | 14.0° | 16.7° | 19.0° |

- Warnings:
- Flash Flood
 - Severe Thunderstorm
 - Tornado

- Smoothing
- Dealias

KCRI
Th + 3dB



Site: KCRI
VST: 10/15/2009 13:57:08 UT
Prod: 10/15/2009 08:34:05 UT
VCP: 211
Tilt: 0.527°

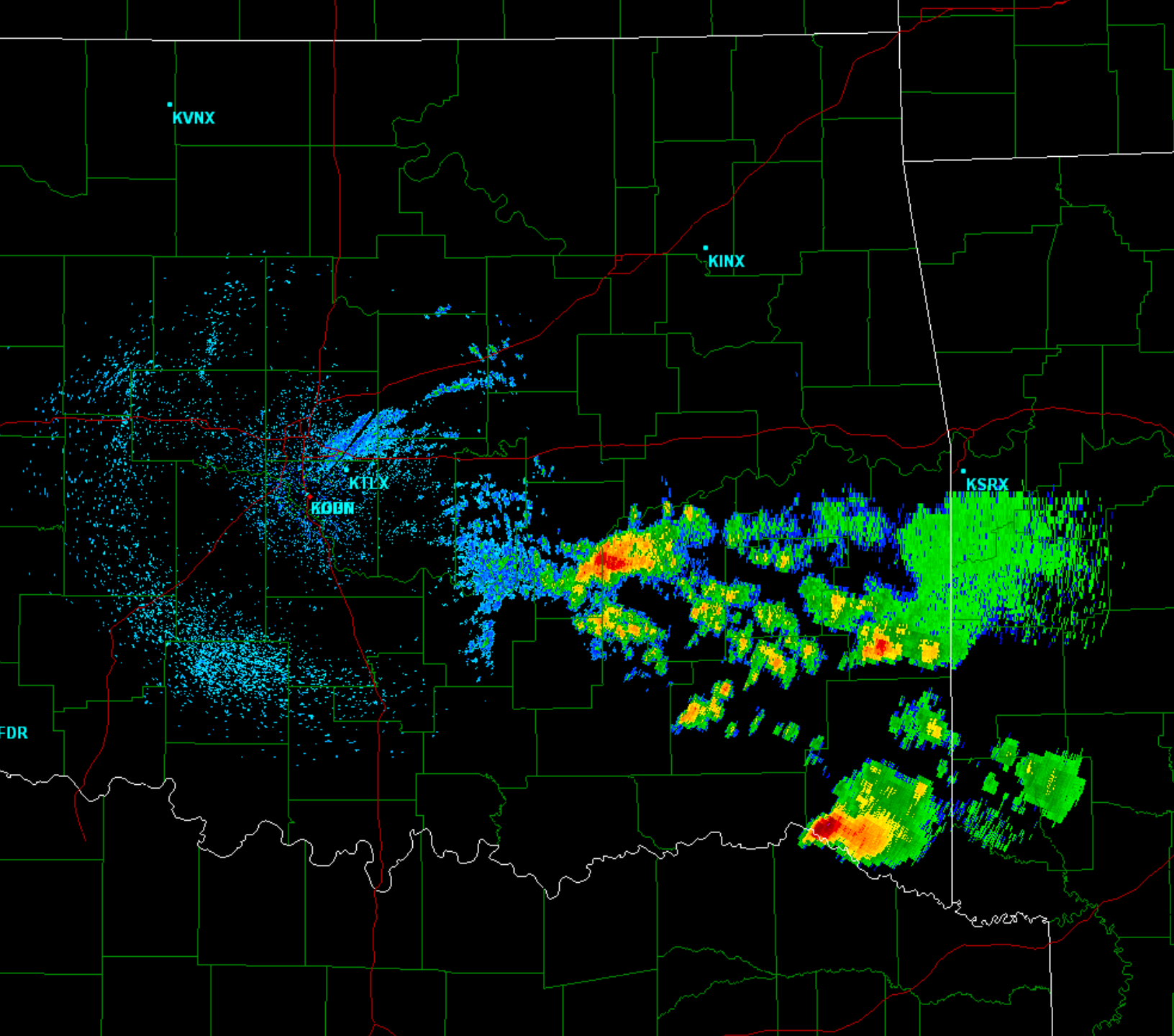
- Select Sweep:
- Base Reflectivity
 - Base Velocity
 - Storm Relative
 - Spectrum Width

- Select Tilt:
- | | | | |
|-------|-------|-------|-------|
| 0.5° | 0.5° | 1.4° | 1.4° |
| 2.5° | 3.4° | 4.4° | 5.3° |
| 6.2° | 7.5° | 8.7° | 10.0° |
| 12.0° | 14.0° | 16.7° | 19.0° |

- Warnings:
- Flash Flood
 - Severe Thunderstorm
 - Tornado

- Smoothing
- Dealias

KCRI
Th + 6dB



Site: KCRI
VST: 10/15/2009 16:39:51 UT
Prod: 10/15/2009 08:34:05 UT
VCP: 211
Tilt: 0.527°

- Select Sweep:
- Base Reflectivity
 - Base Velocity
 - Storm Relative
 - Spectrum Width

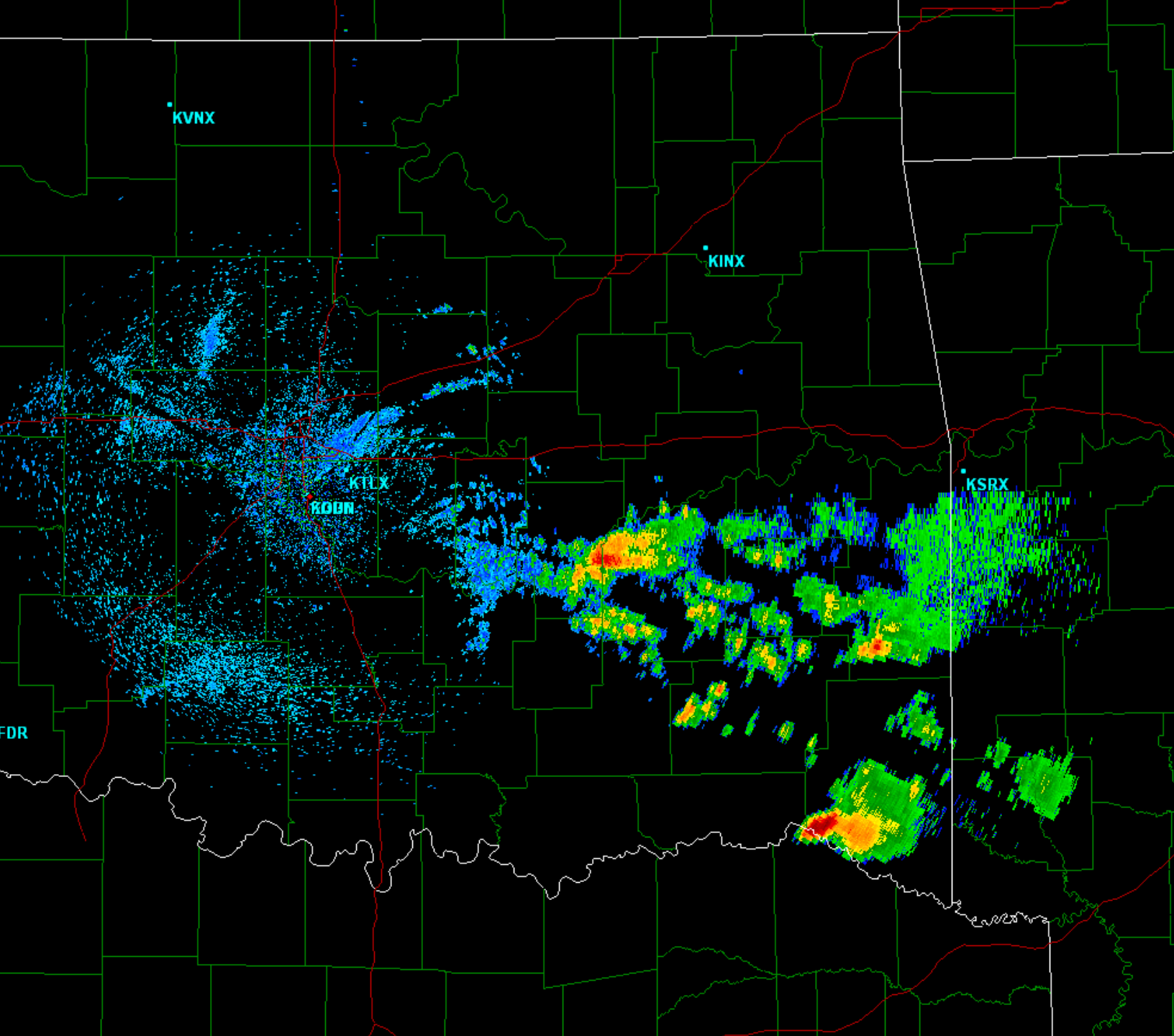
- Select Tilt:
- | | | | |
|-------|-------|-------|-------|
| 0.5° | 0.5° | 1.4° | 1.4° |
| 2.5° | 3.4° | 4.4° | 5.3° |
| 6.2° | 7.5° | 8.7° | 10.0° |
| 12.0° | 14.0° | 16.7° | 19.0° |

- Warnings:
- Flash Flood
 - Severe Thunderstorm
 - Tornado

- Smoothing
- Dealias

KCRI
Th + 8dB

Site: KOUN
VST: 10/15/2009 08:32:06 UT
Prod: 10/15/2009 08:32:05 UT
VCP: 211
Tilt: 0.527°



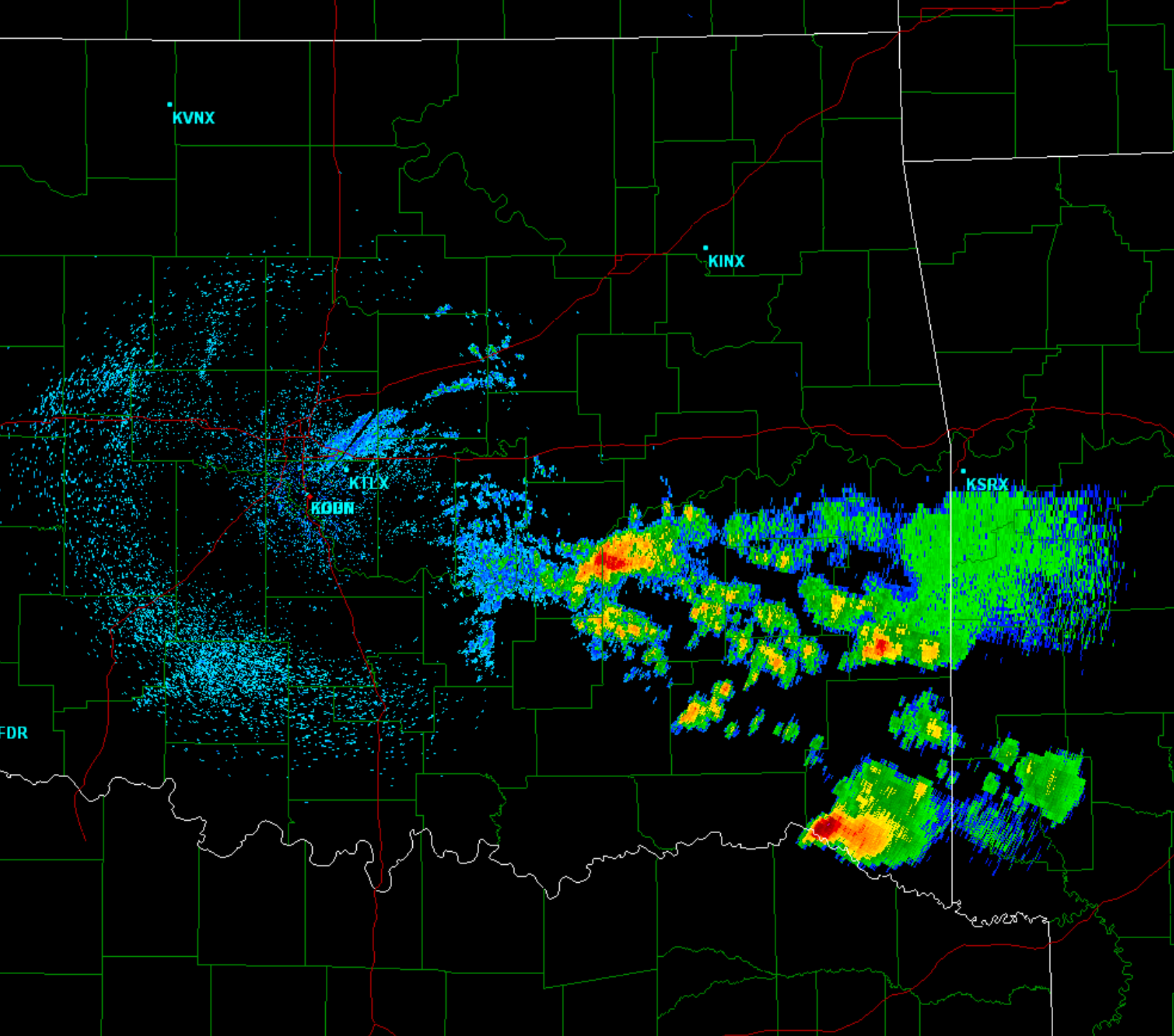
- Select Sweep:
- Base Reflectivity
 - Base Velocity
 - Storm Relative
 - Spectrum Width

- Select Tilt:
- | | | | |
|-------|-------|-------|-------|
| 0.5° | 0.5° | 1.5° | 1.5° |
| 2.5° | 3.4° | 4.4° | 5.3° |
| 6.3° | 7.5° | 8.7° | 10.0° |
| 12.0° | 14.1° | 16.7° | 19.1° |

- Warnings:
- Flash Flood
 - Severe Thunderstorm
 - Tornado

- Smoothing
- Dealias

KOUN



Site: KCRI
VST: 10/15/2009 13:57:08 UT
Prod: 10/15/2009 08:34:05 UT
VCP: 211
Tilt: 0.527°

- Select Sweep:
- Base Reflectivity
 - Base Velocity
 - Storm Relative
 - Spectrum Width

- Select Tilt:
- | | | | |
|-------|-------|-------|-------|
| 0.5° | 0.5° | 1.4° | 1.4° |
| 2.5° | 3.4° | 4.4° | 5.3° |
| 6.2° | 7.5° | 8.7° | 10.0° |
| 12.0° | 14.0° | 16.7° | 19.0° |

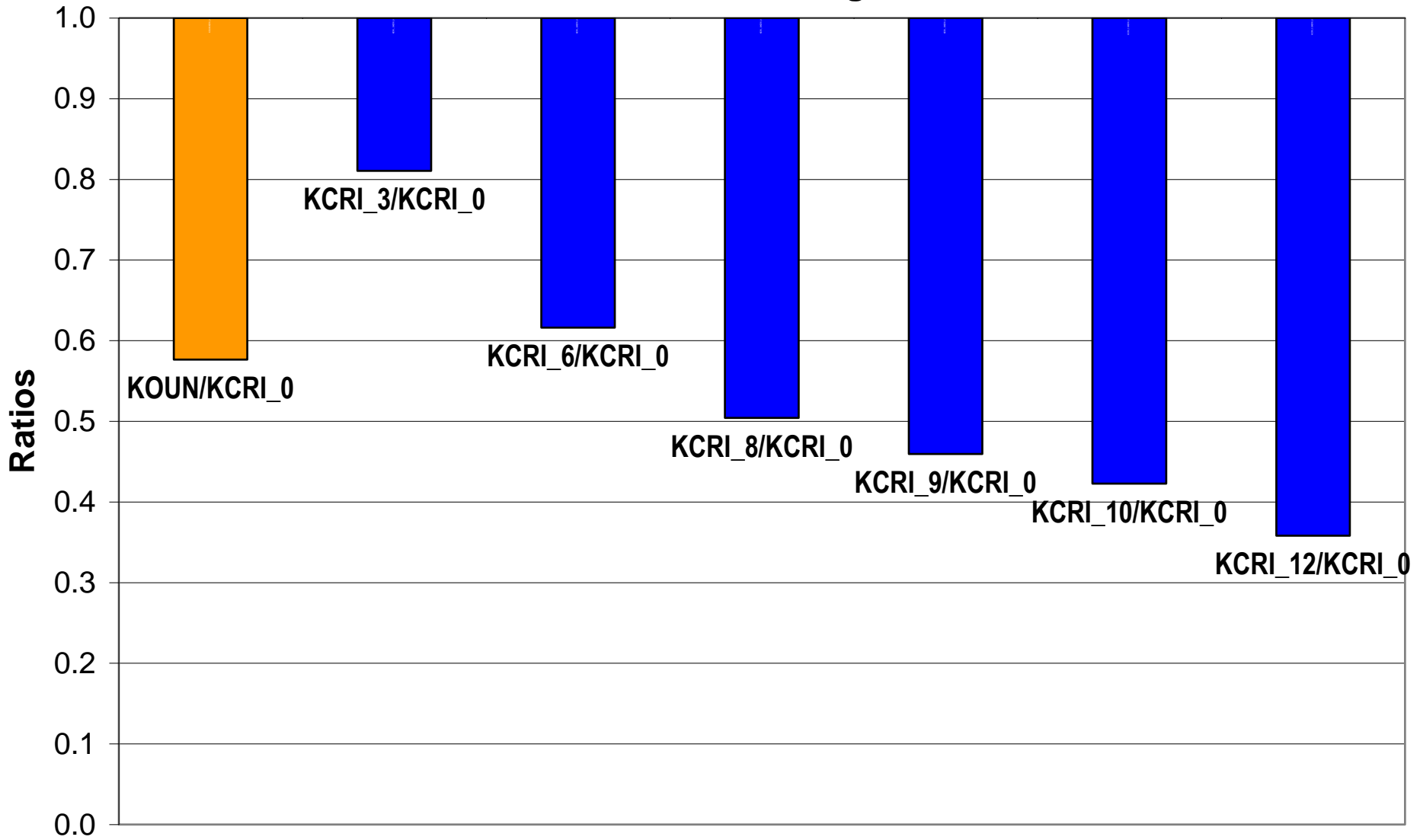
- Warnings:
- Flash Flood
 - Severe Thunderstorm
 - Tornado

- Smoothing
- Dealias

KCRI
Th + 6dB

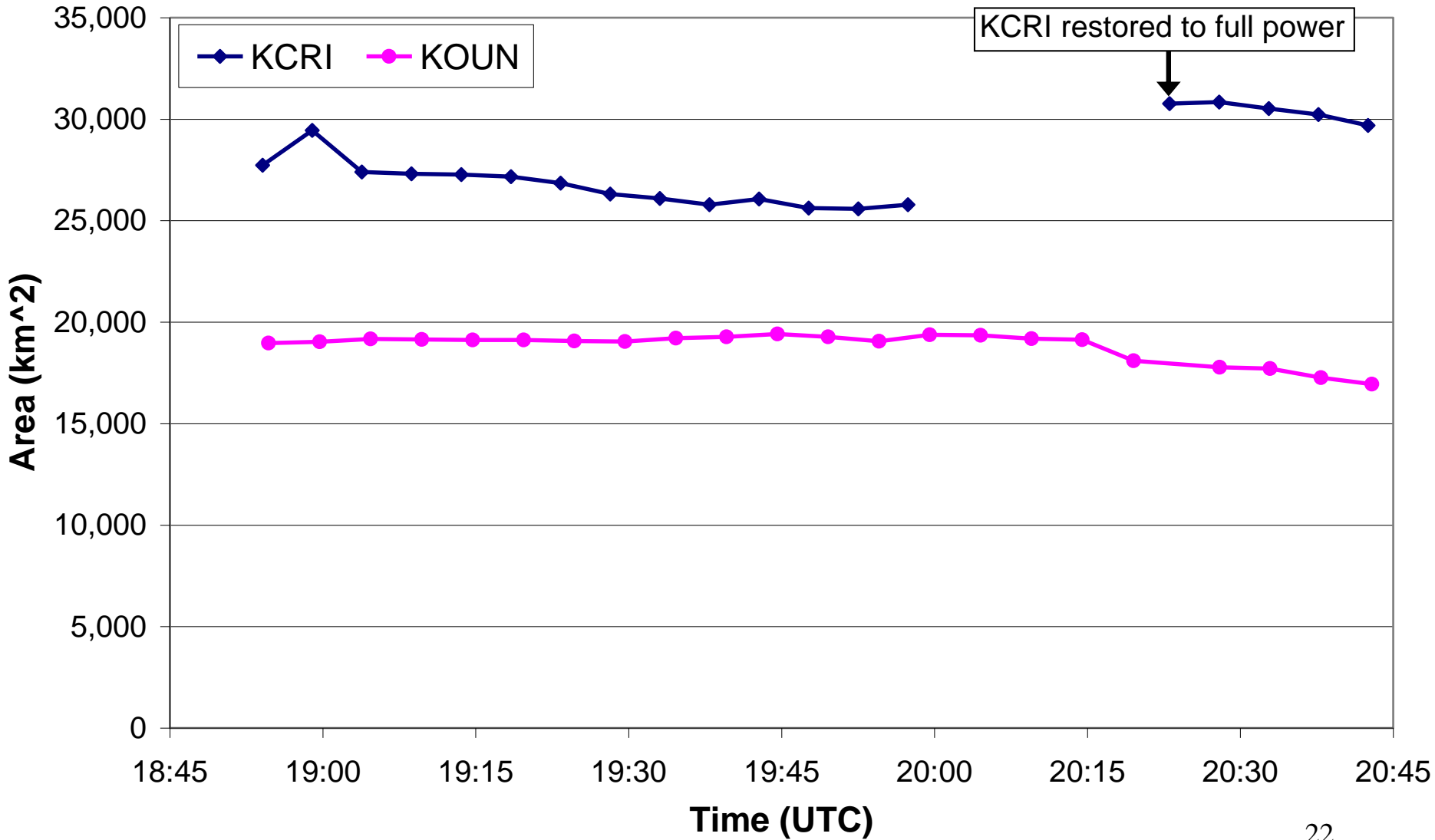
KOUN/KCRI_0 & KCRI_x/KCRI_0 Reflectivity Bin Count Ratios

15 October 2009, 08:32Z, 0.5 Deg Elev, VCP 211



KCRI Half-power Test

9 November 2009, 0.5 Deg Elev, VCP 11



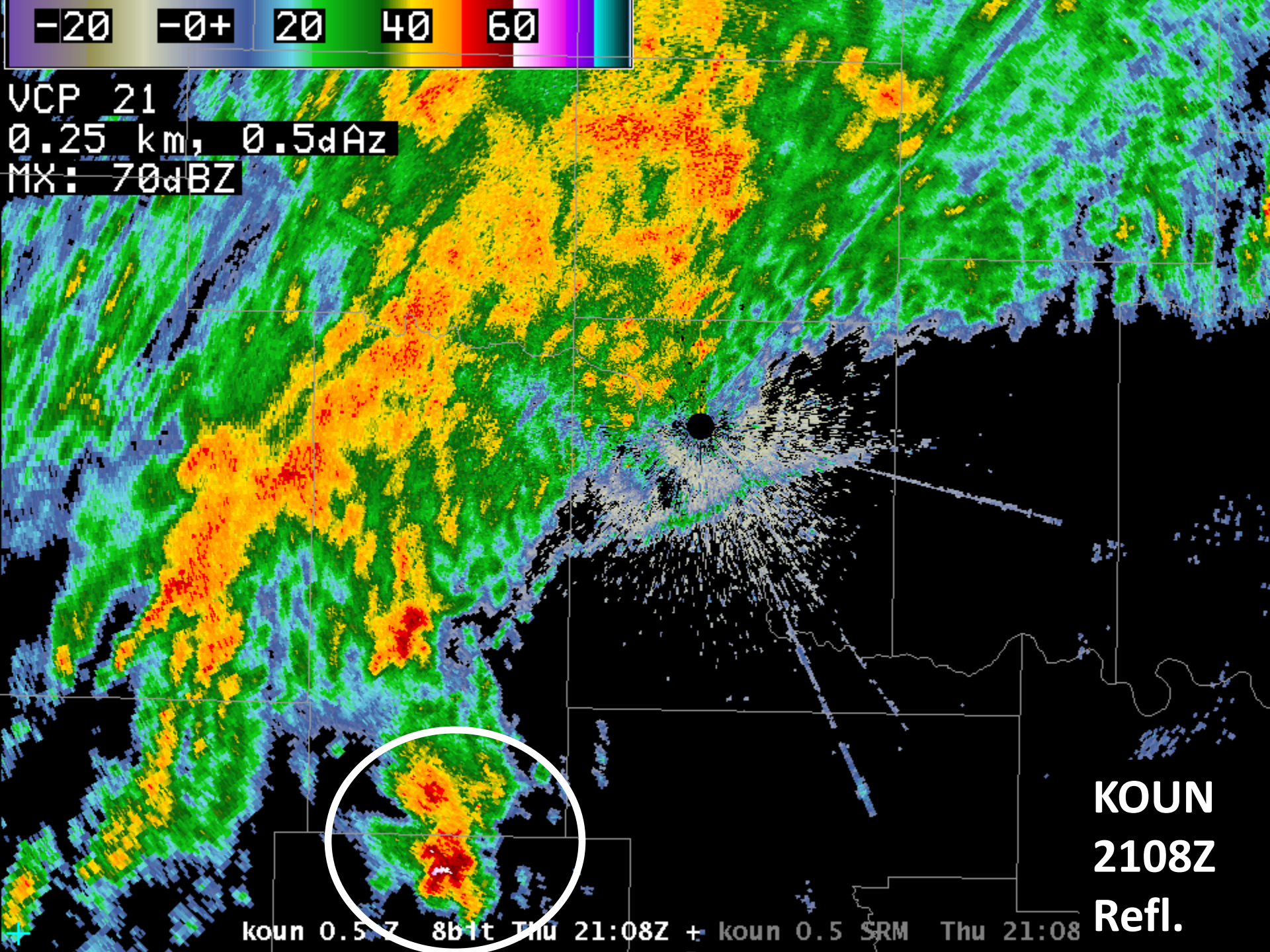


KOUN Dual-Pol Evaluation

- 2108 UTC 10/8/2009
- KOUN: VCP 21
- Severe Convection, Heavy Rain, light rain (stratiform), TBSS

-20 -0+ 20 40 60

VCP 21
0.25 km, 0.5dBZ
MX: 70dBZ



KOUN
2108Z
Refl.

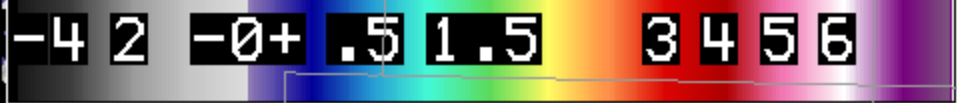
koun 0.5 7 8b1t Thu 21:08Z + koun 0.5 SRM Thu 21:08



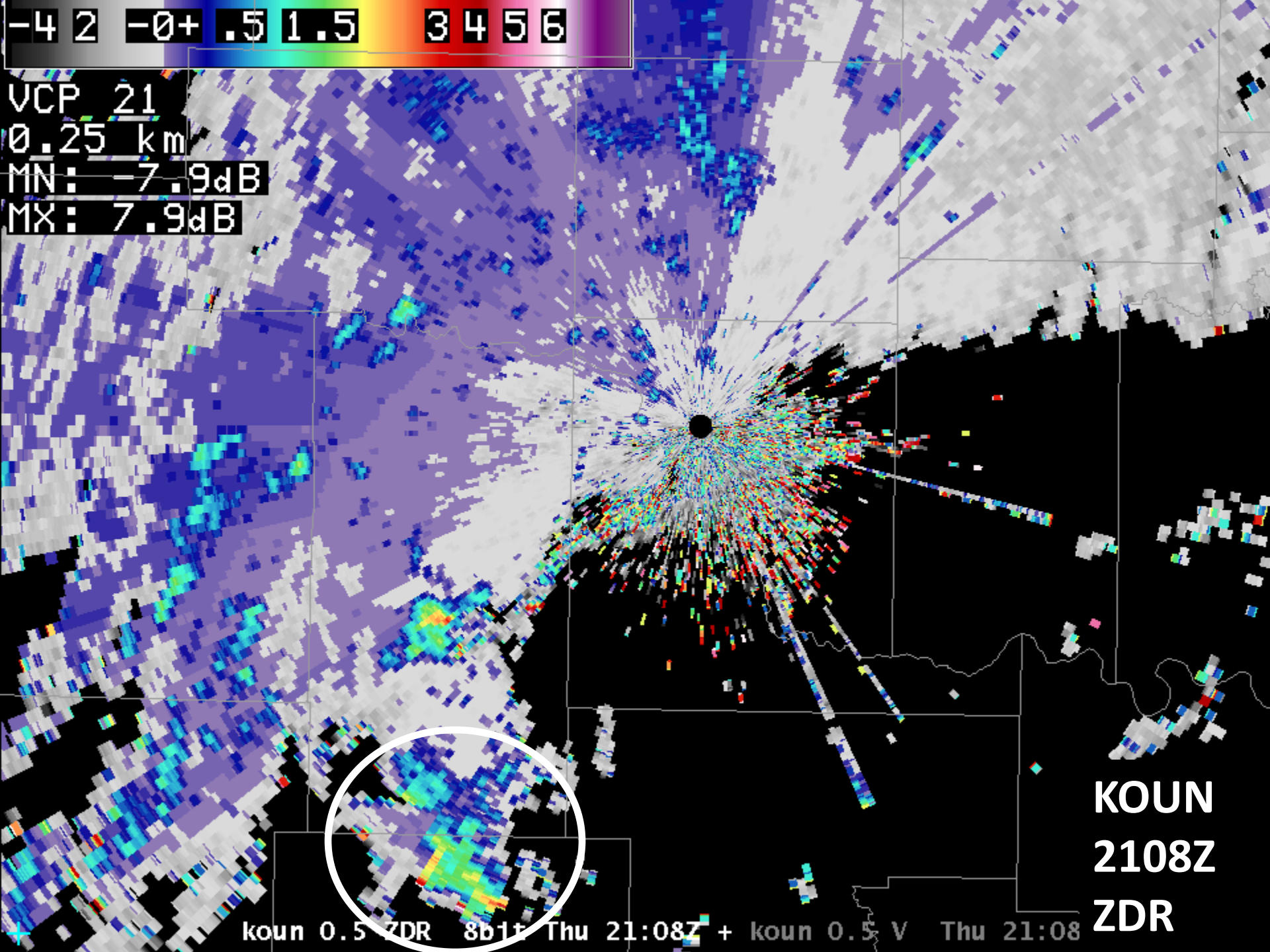
ZDR Assessment



- Problems Observed:
 - ZDR has a slight negative bias
 - Negative values above the melting layer where there should be positive values
 - Extremely inconsistent
- The trend is toward better (more correct) values
 - Larger ZDR values correctly appear in melting layer
 - Overall structure looks correct
- Following image was among the best we've seen, the rest of the time we've seen even larger negative bias



VCP 21
0.25 km
MN: -7.9dB
MX: 7.9dB



KOUN
2108Z
ZDR

koun 0.5 ZDR 8b11 Thu 21:08Z + koun 0.5 V Thu 21:08

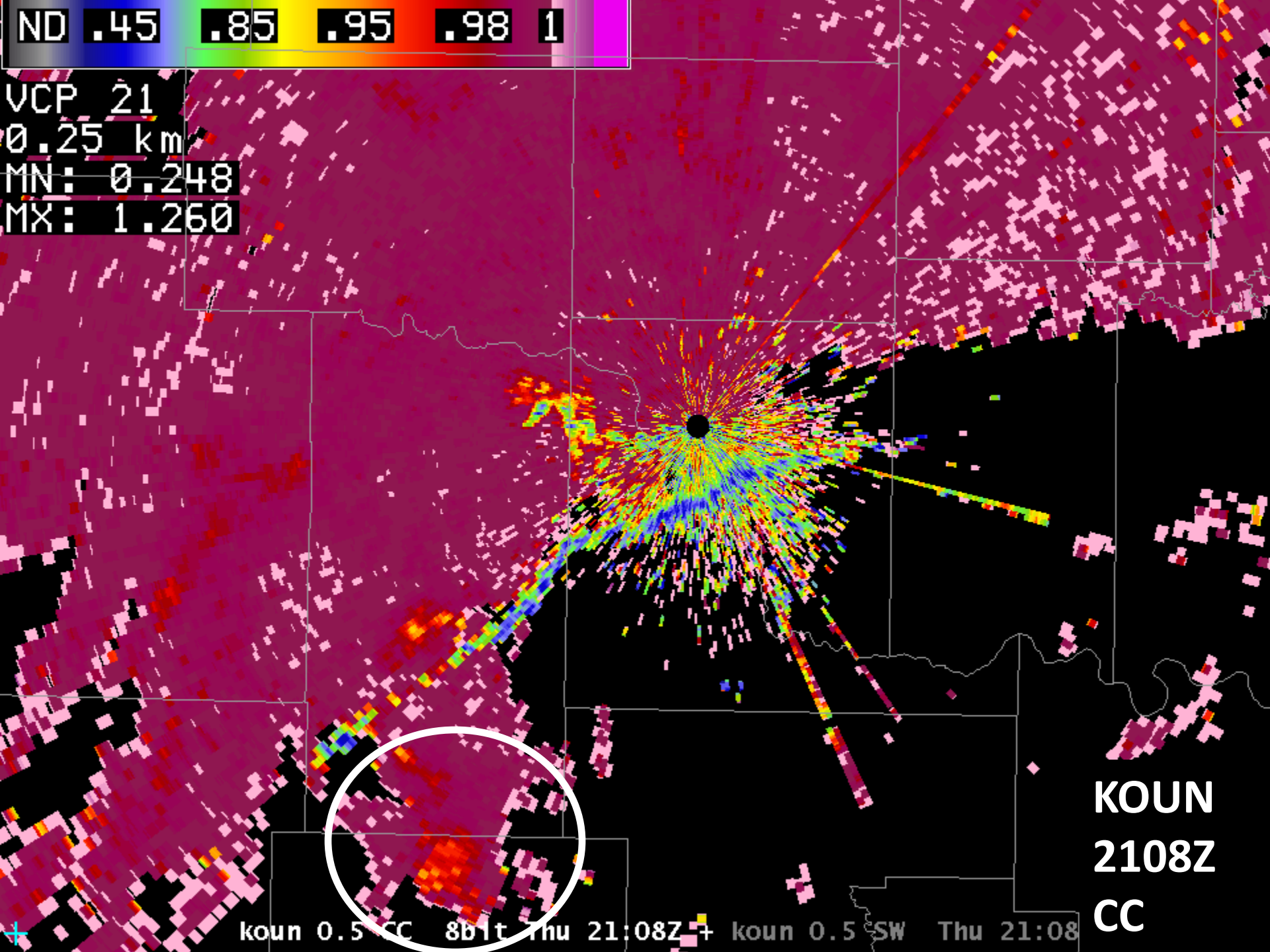


CC Assessment

- Problems Observed:
 - All values increase in weaker SNR, majority of values in weak SNR should decrease
 - They are overcorrecting for noise in the CC products
 - Batch cuts unreliable (intermittent noise)
- The trend is toward better (more correct) values
 - Correctly shows lower values in melting layer
 - Overall structure looks correct with the exception of the fringes



VCP 21
0.25 km
MN: 0.248
MX: 1.260



KOUN
2108Z
CC

koun 0.5 CC 8bit Thu 21:08Z + koun 0.5 SW Thu 21:08

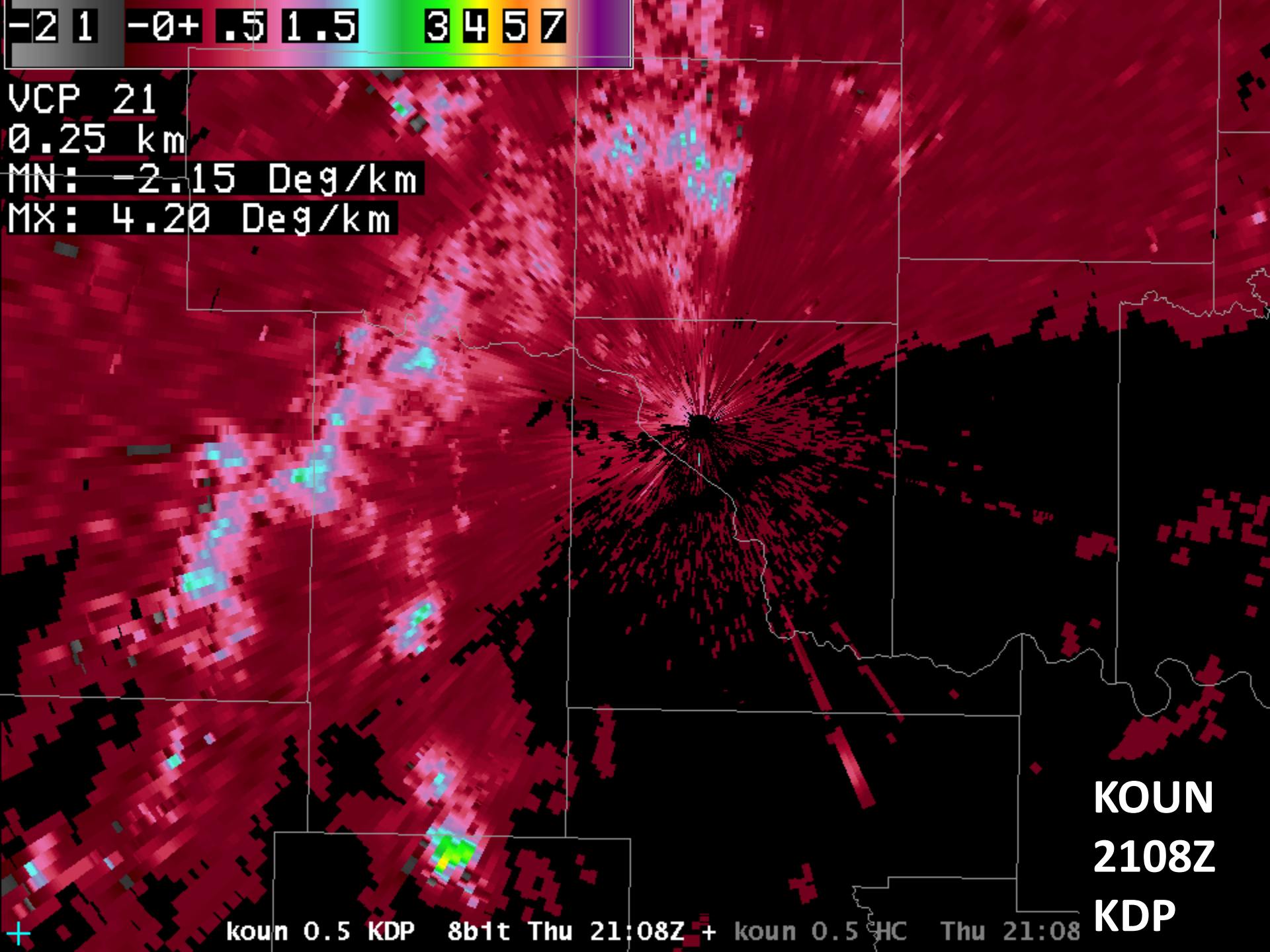


KDP Assessment

- From a subjective look, data look reasonable



VCP 21
0.25 km
MN: -2.15 Deg/km
MX: 4.20 Deg/km



KOUN
2108Z
KDP

+ koun 0.5 KDP 8bit Thu 21:08Z + koun 0.5 HC Thu 21:08



DQ Summary



- Coverage for all 3 base moments; R, V, and W is ~6-8 Db lower than KCRI
 - Trend in imagery has not shown significant improvement
- KOUN reflectivity values still lower in cores
- V and W values look good
- Dual-Pol variables are improving and showing more appropriate structure
 - However, data is still inconsistent & at times unreliable



Questions?