



# ***25th Operational Weather Squadron*** ***Davis-Monthan AFB, AZ***



**Mission / Radar Operations Briefing**  
**12 / 13 Oct 05**



## ***25 OWS TAC OVERVIEW***

- **25 OWS mission**
- **Area of responsibility**
- **Special support**
- **Radar configuration and outfitting**
- **Routine / non-routine radar uses**



## 25 OWS MISSION

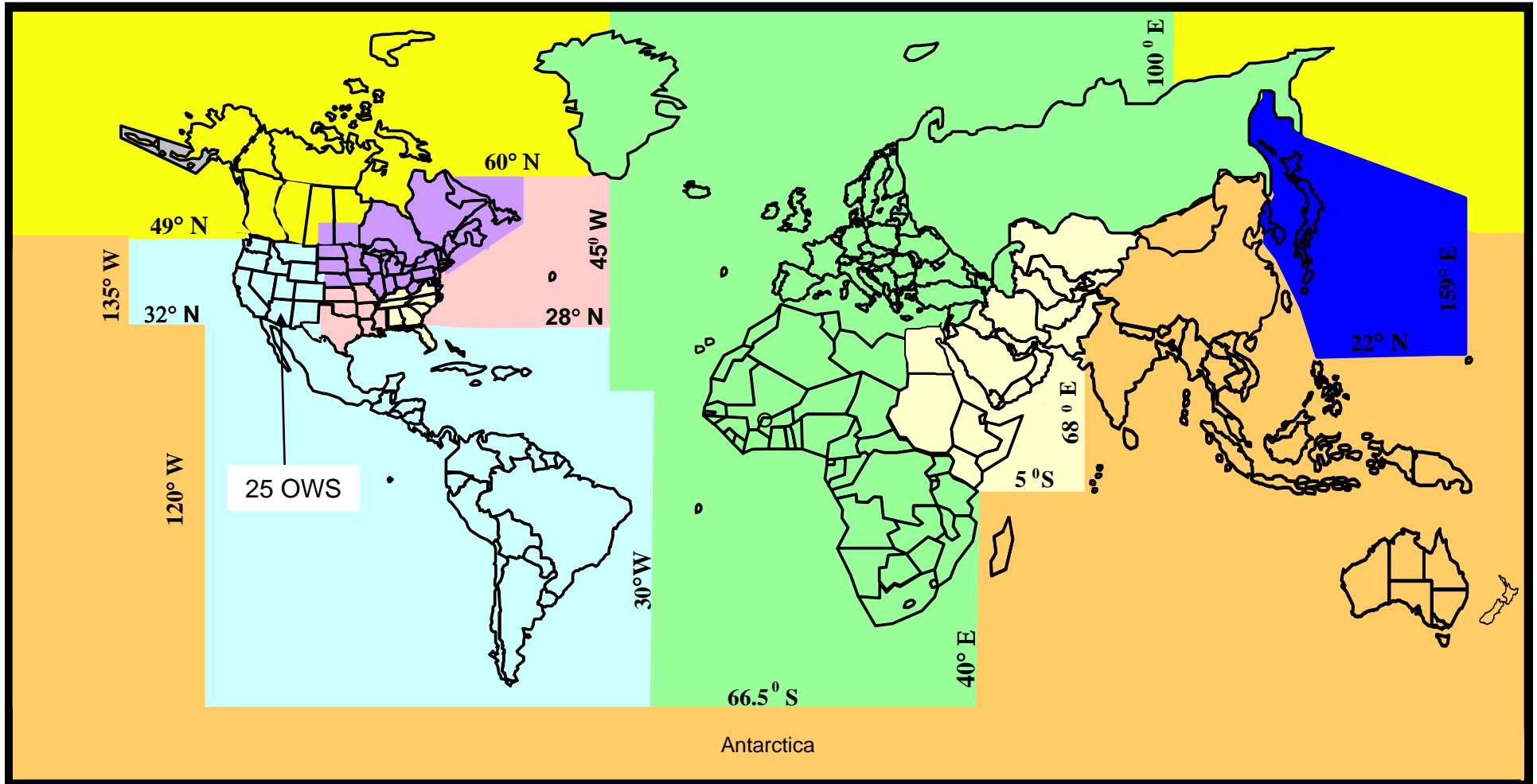
**Integrate timely, accurate, and relevant environmental information into western CONUS and Commander, USSOUTHCOM, military operations to maximize mission completion**





UNCLASSIFIED

# OWS AORs



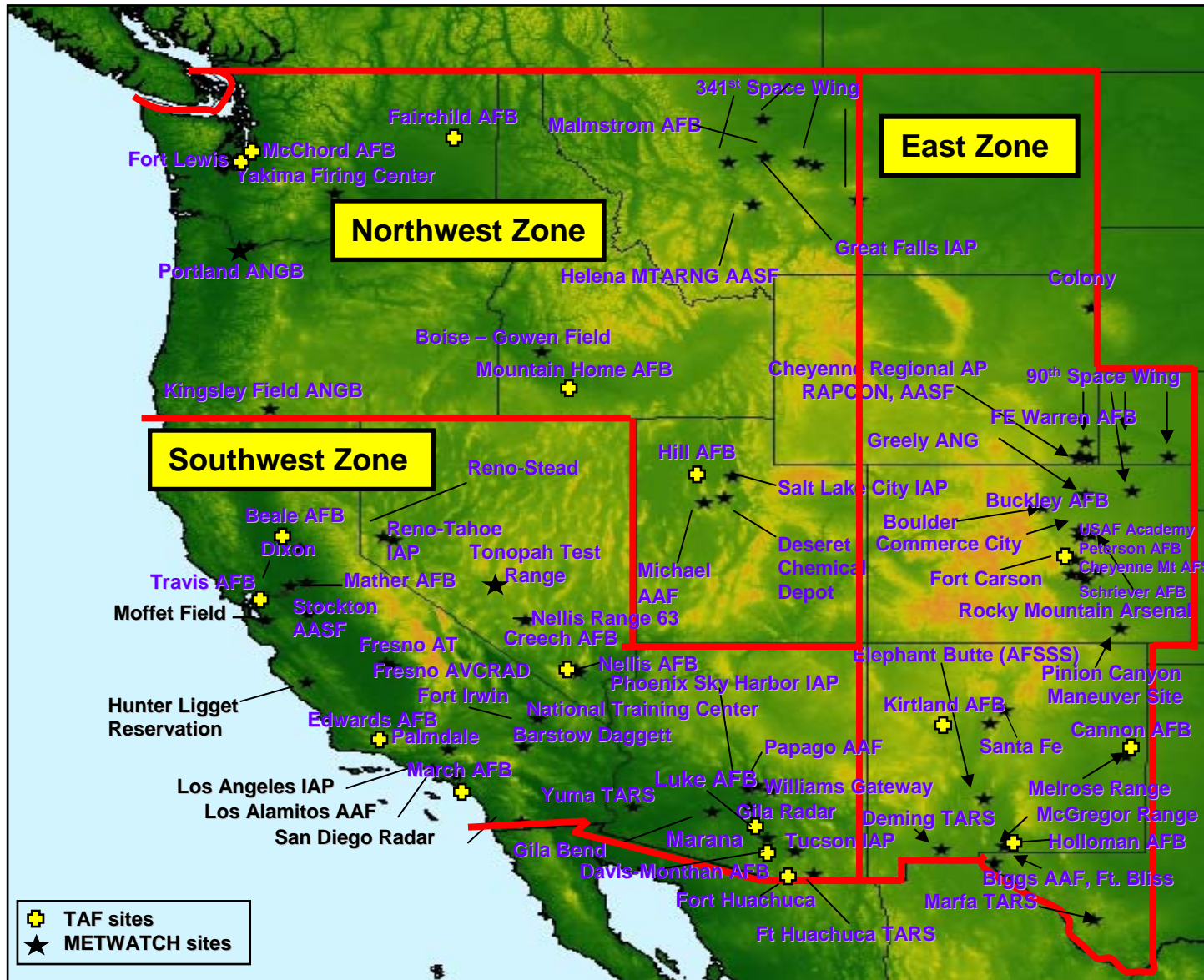
UNCLASSIFIED

*EXPLOIT WEATHER FOR VICTORY*



UNCLASSIFIED

# 25 OWS AOR



## SOUTHCOM



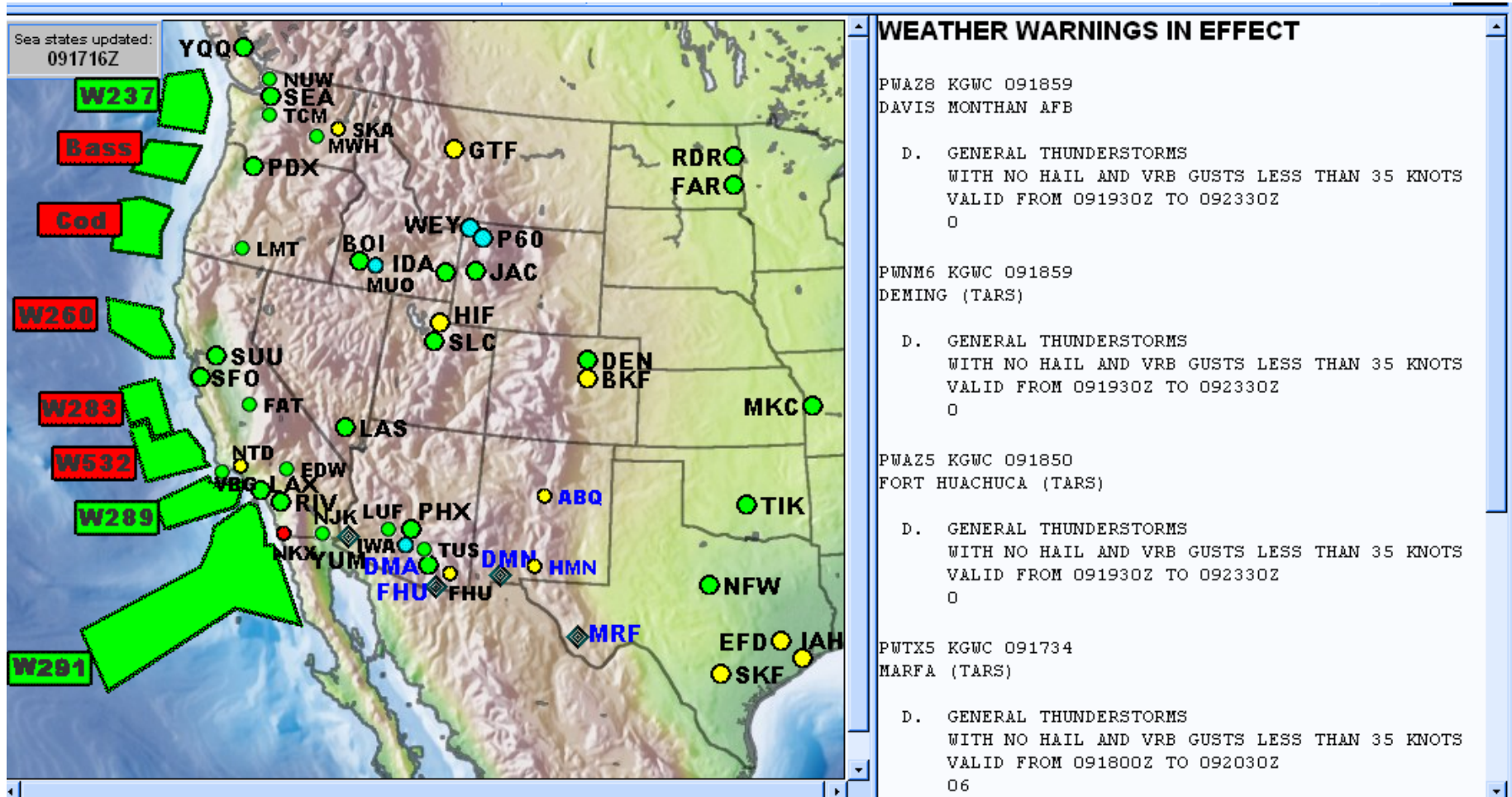
**90<sup>th</sup> Space Wing**  
 4 Squadrons with 5 flights each=21

**341<sup>st</sup> Space Wing**  
 One wing 4 Squadrons =5



UNCLASSIFIED

# 25 OWS WADS



SAUS14 KAWN 091800 RRG  
 TETAR KHIF 091755Z 34009KT 7SM FEW200 22/M03 A3036 RMK CONTRAILS  
 DATA ESTMD SLP210 8/001 9/001 5000Z

FTUS14 KAWN 091109  
 TAF KHIF 091111 09015G25KT 9999 FEW120 QNH3029INS  
 BECMG 1718 23012KT 9999 SKC QNH3014INS WND 190V270 WND 0900  
 AFT06 T26/23Z T13/12Z



UNCLASSIFIED

## 25 OWS Special Support

Predator-B UAV



TARS



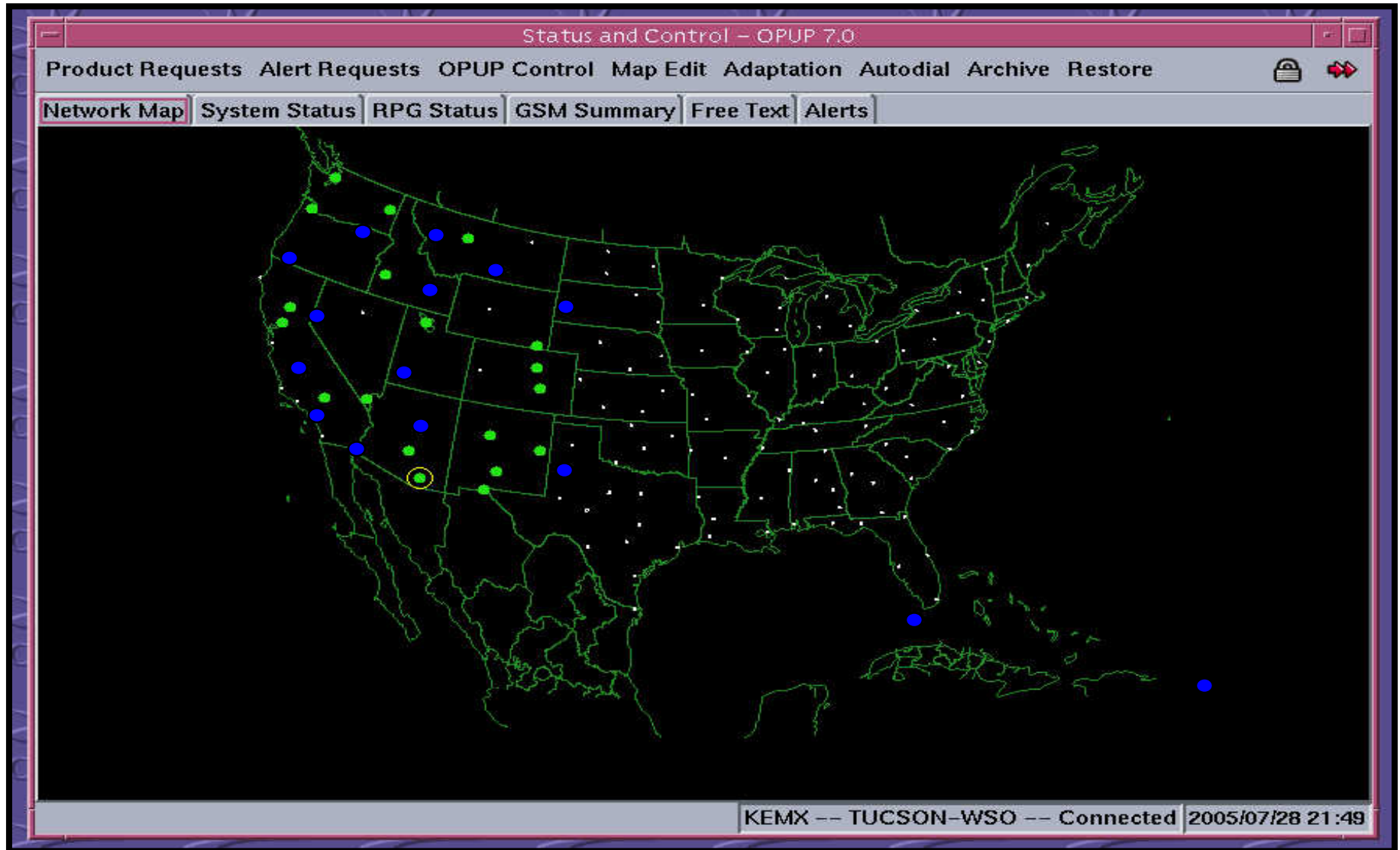
UNCLASSIFIED

*EXPLOIT WEATHER FOR VICTORY*



UNCLASSIFIED

# 25 OWS RADAR



UNCLASSIFIED

*EXPLOIT WEATHER FOR VICTORY*

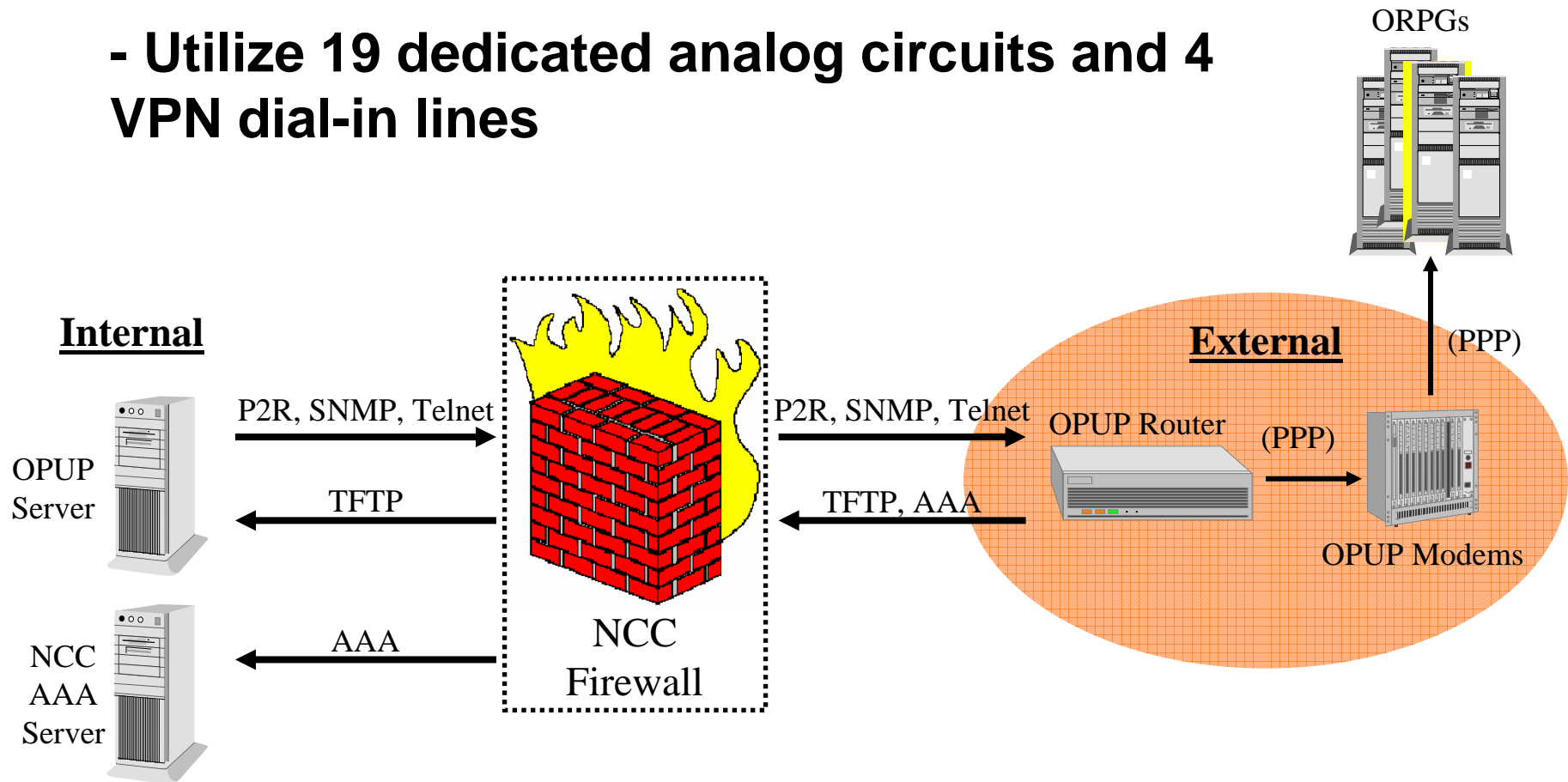




UNCLASSIFIED

## OPUP Configuration

- Utilize 19 dedicated analog circuits and 4 VPN dial-in lines



UNCLASSIFIED

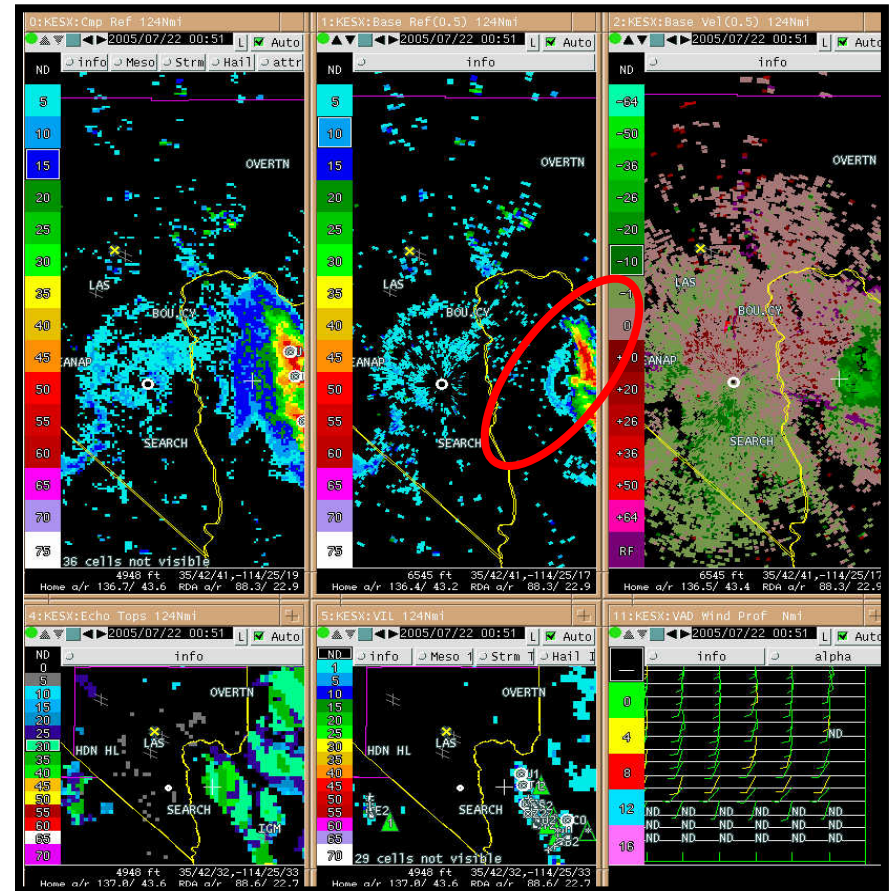
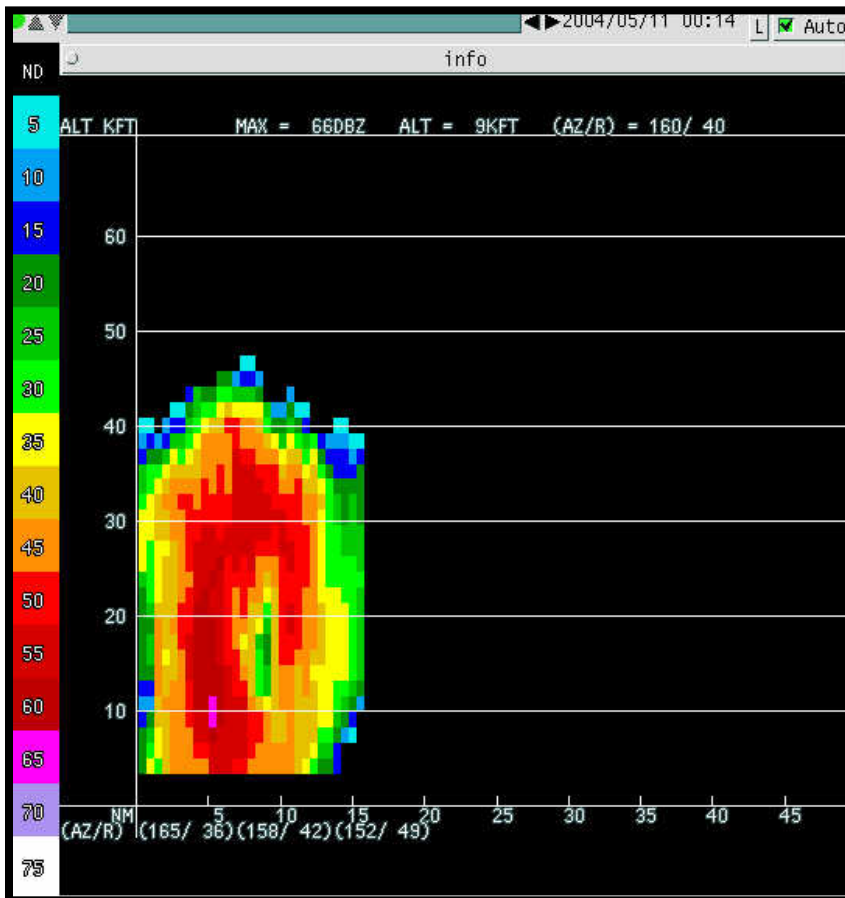
EXPLOIT WEATHER FOR VICTORY



UNCLASSIFIED

# 25 OWS RADAR

- Major radar detectable weather concerns



UNCLASSIFIED

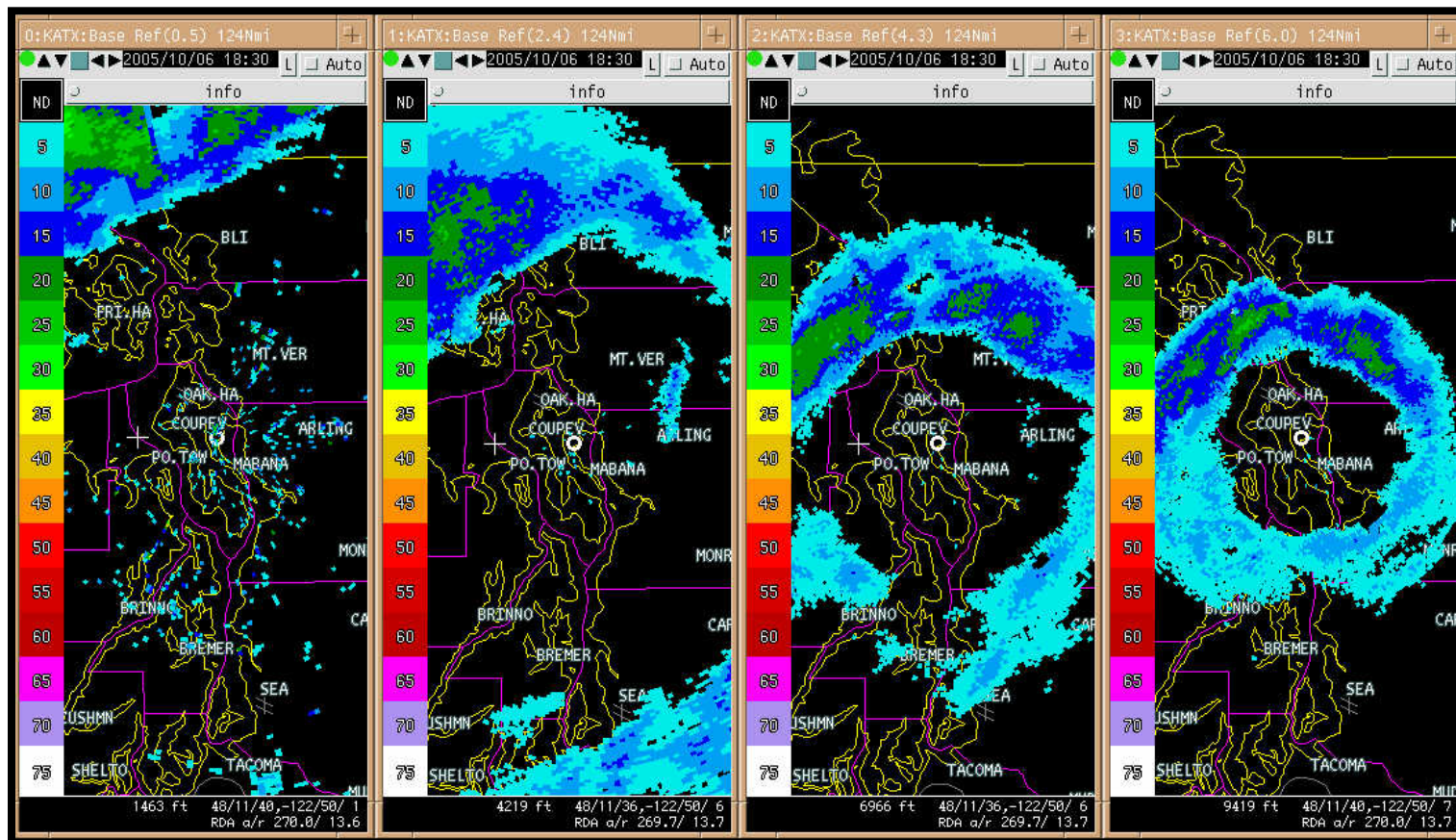
EXPLOIT WEATHER FOR VICTORY



UNCLASSIFIED

# 25 OWS RADAR

- Secondary—but important weather concerns



UNCLASSIFIED

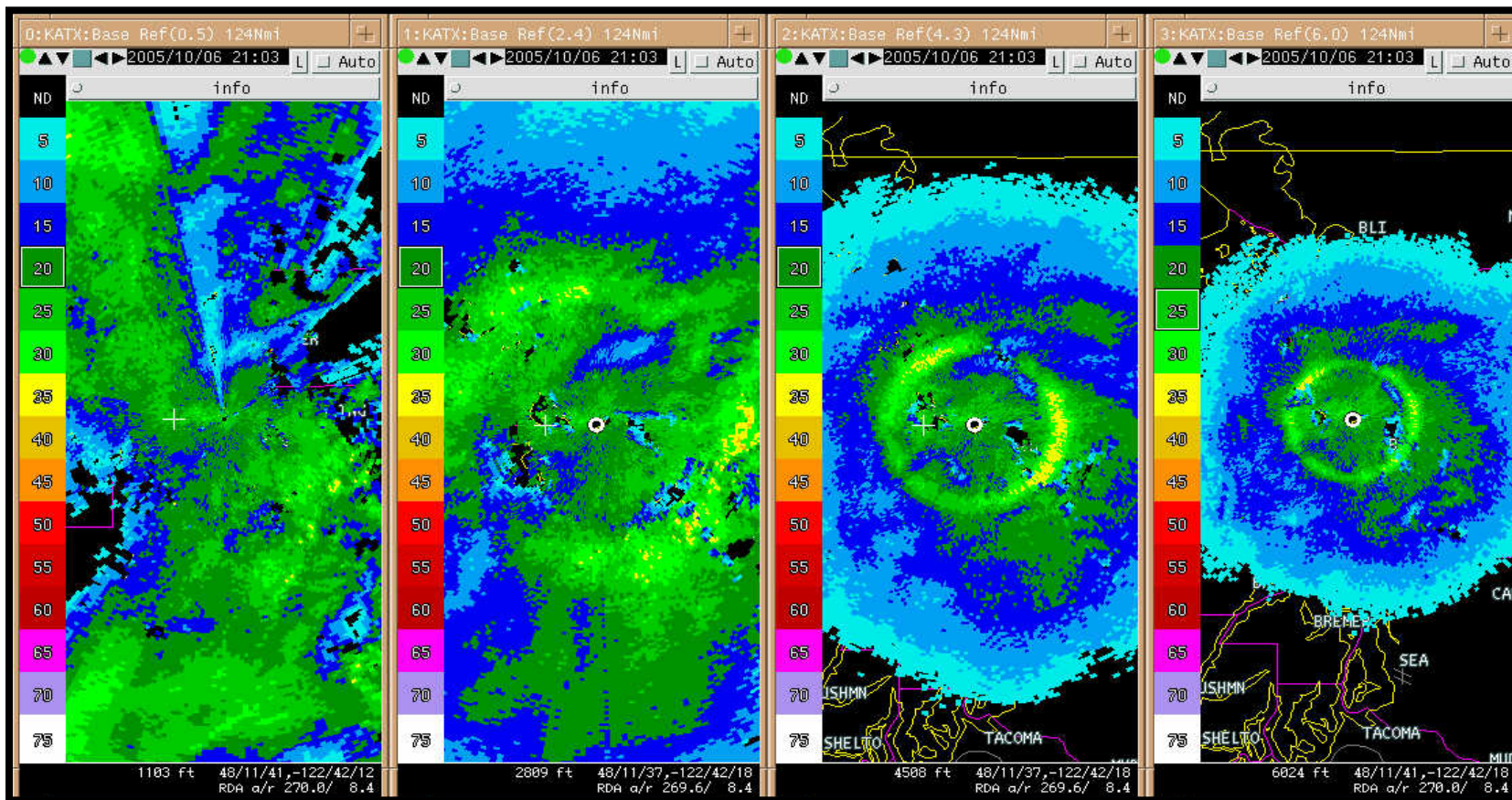
EXPLOIT WEATHER FOR VICTORY



UNCLASSIFIED

# 25 OWS RADAR

## - Clouds and icing



UNCLASSIFIED

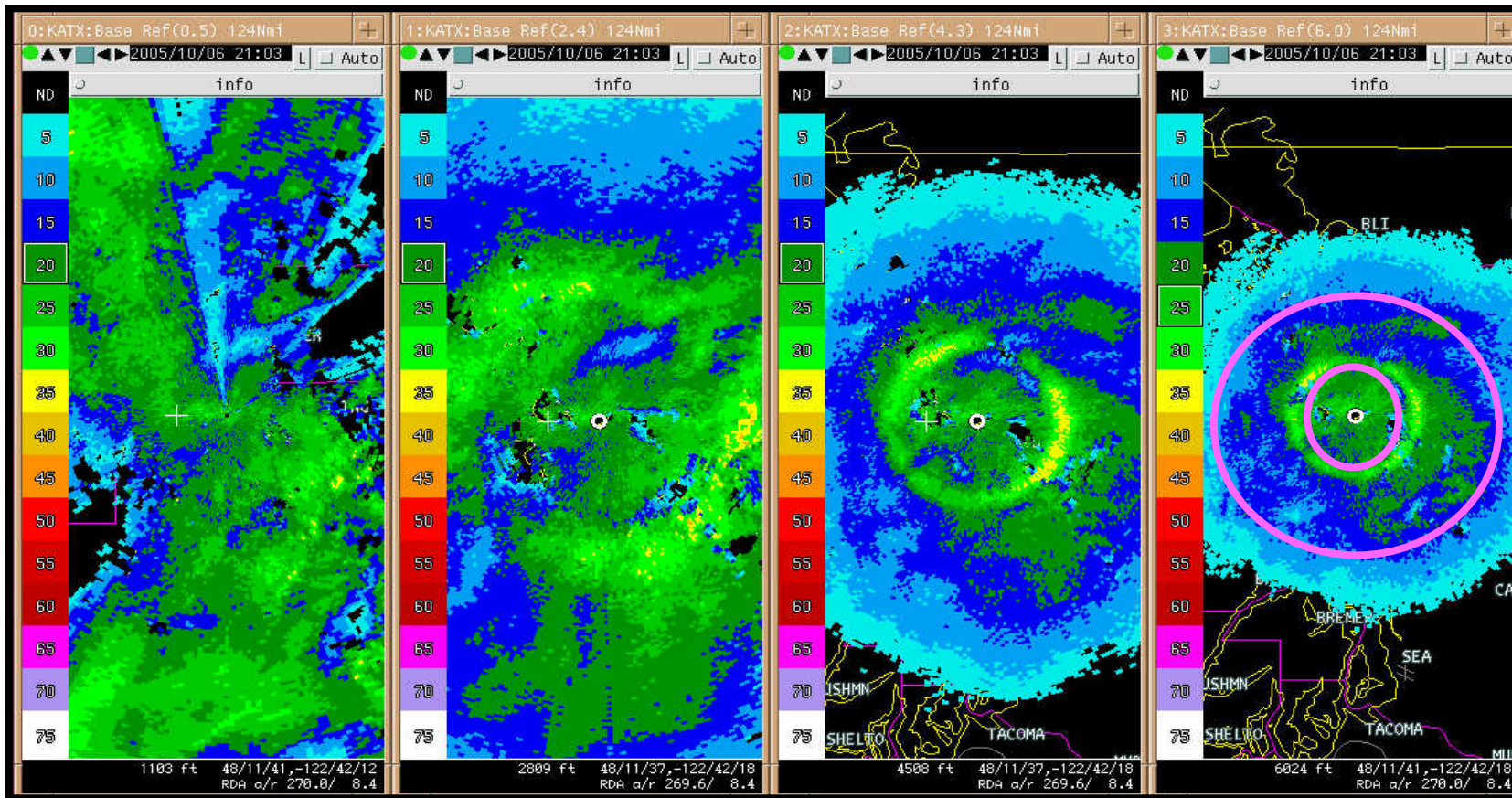
EXPLOIT WEATHER FOR VICTORY



UNCLASSIFIED

# 25 OWS RADAR

## - Clouds and icing?



UNCLASSIFIED

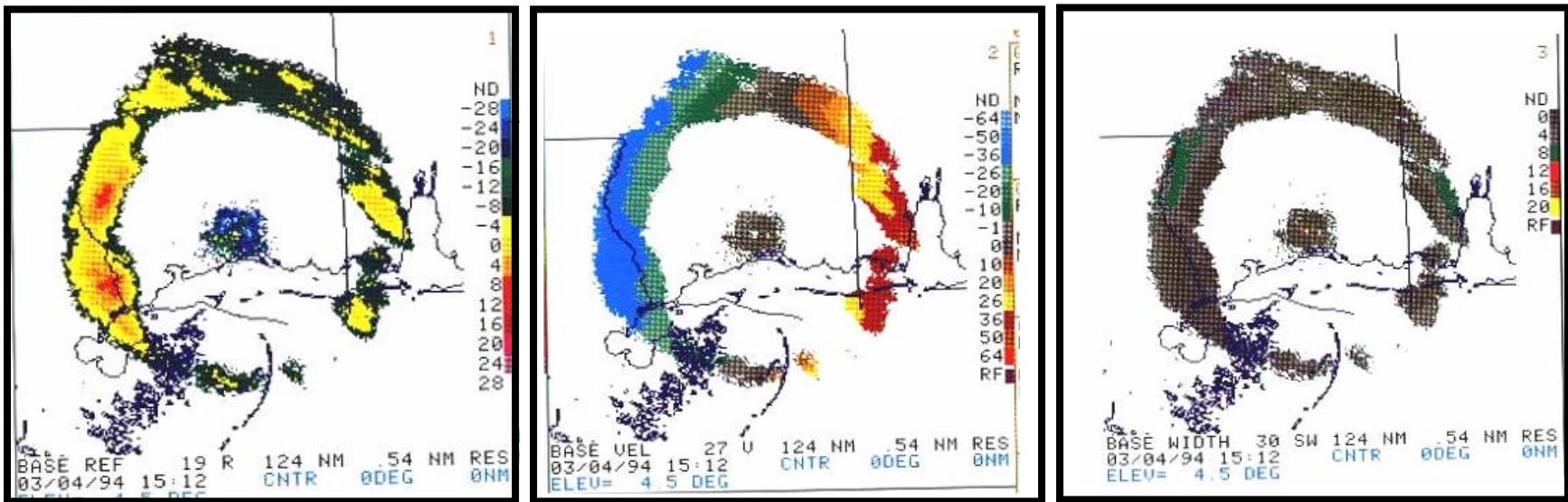
EXPLOIT WEATHER FOR VICTORY



UNCLASSIFIED

## 25 OWS RADAR

- What can we derive from all three base moments?



UNCLASSIFIED

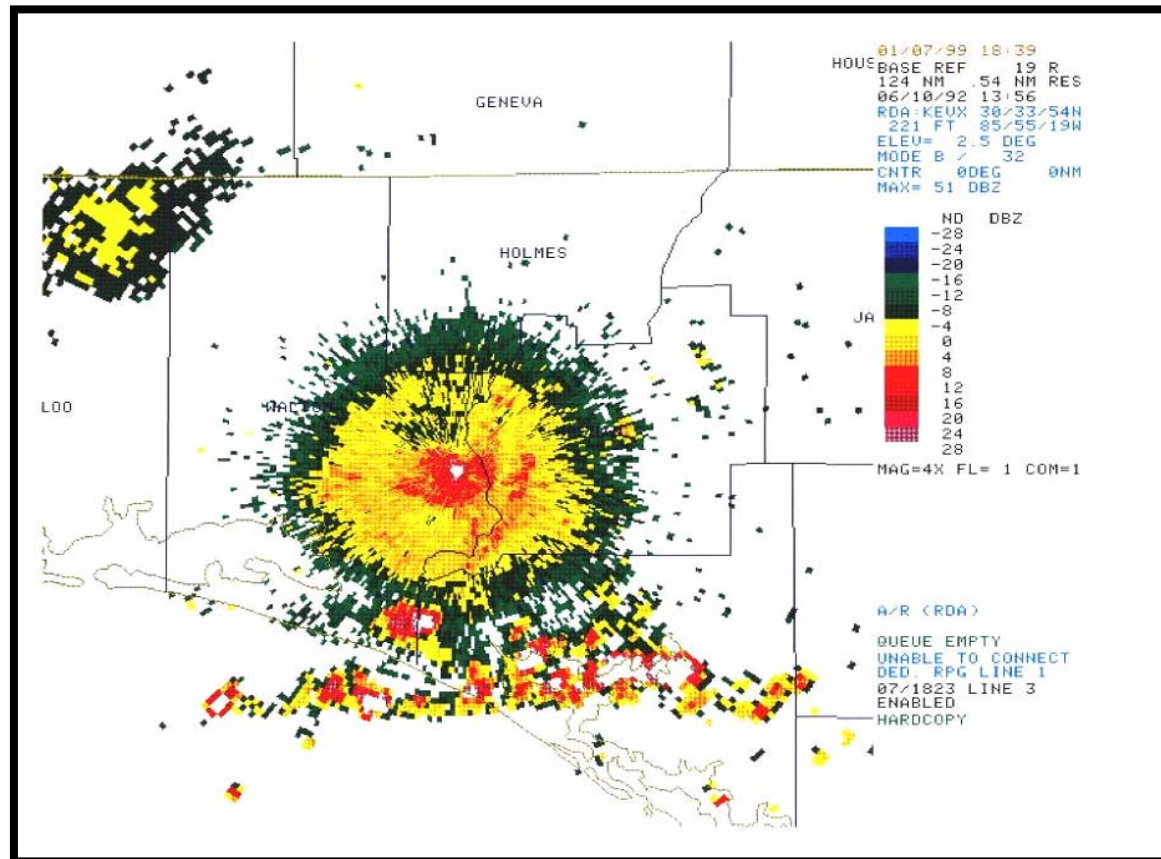
EXPLOIT WEATHER FOR VICTORY



UNCLASSIFIED

# 25 OWS RADAR

- What do we routinely overlook?



UNCLASSIFIED

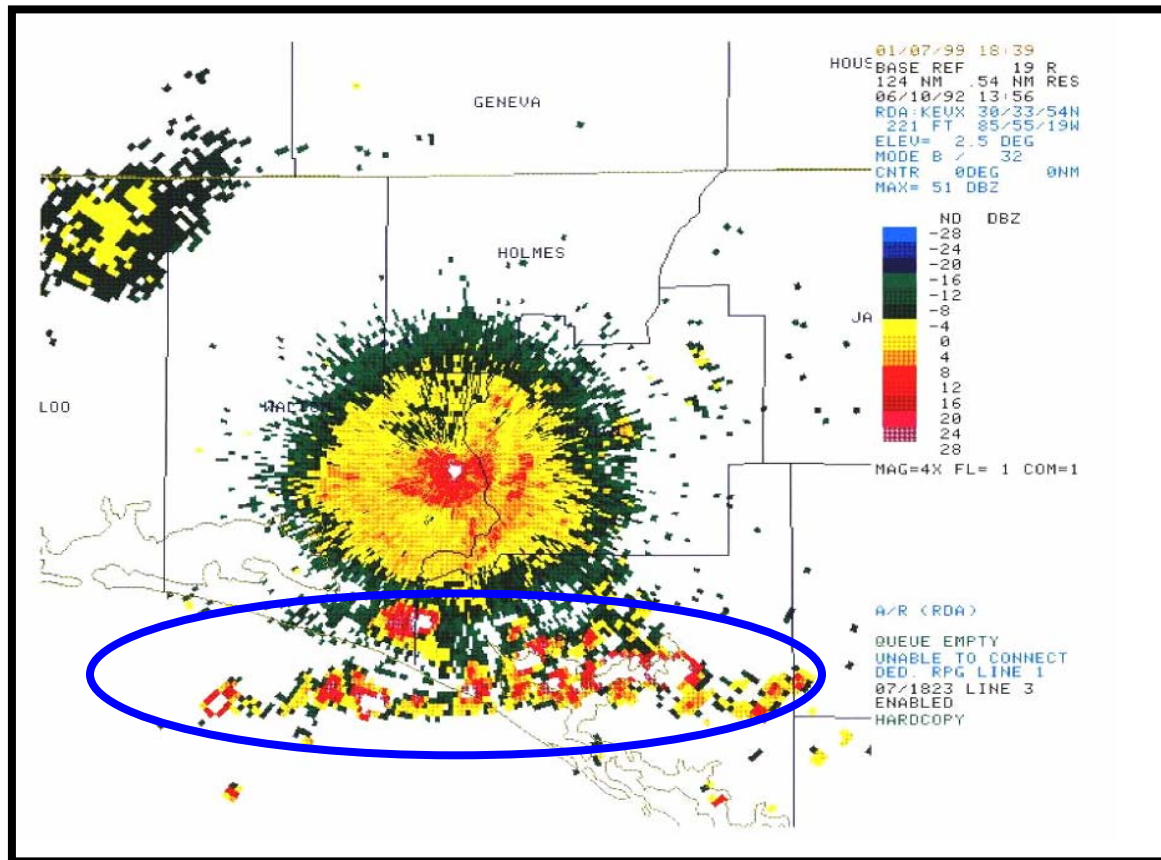
EXPLOIT WEATHER FOR VICTORY



UNCLASSIFIED

# 25 OWS RADAR

- The front is an easy mark



UNCLASSIFIED

EXPLOIT WEATHER FOR VICTORY

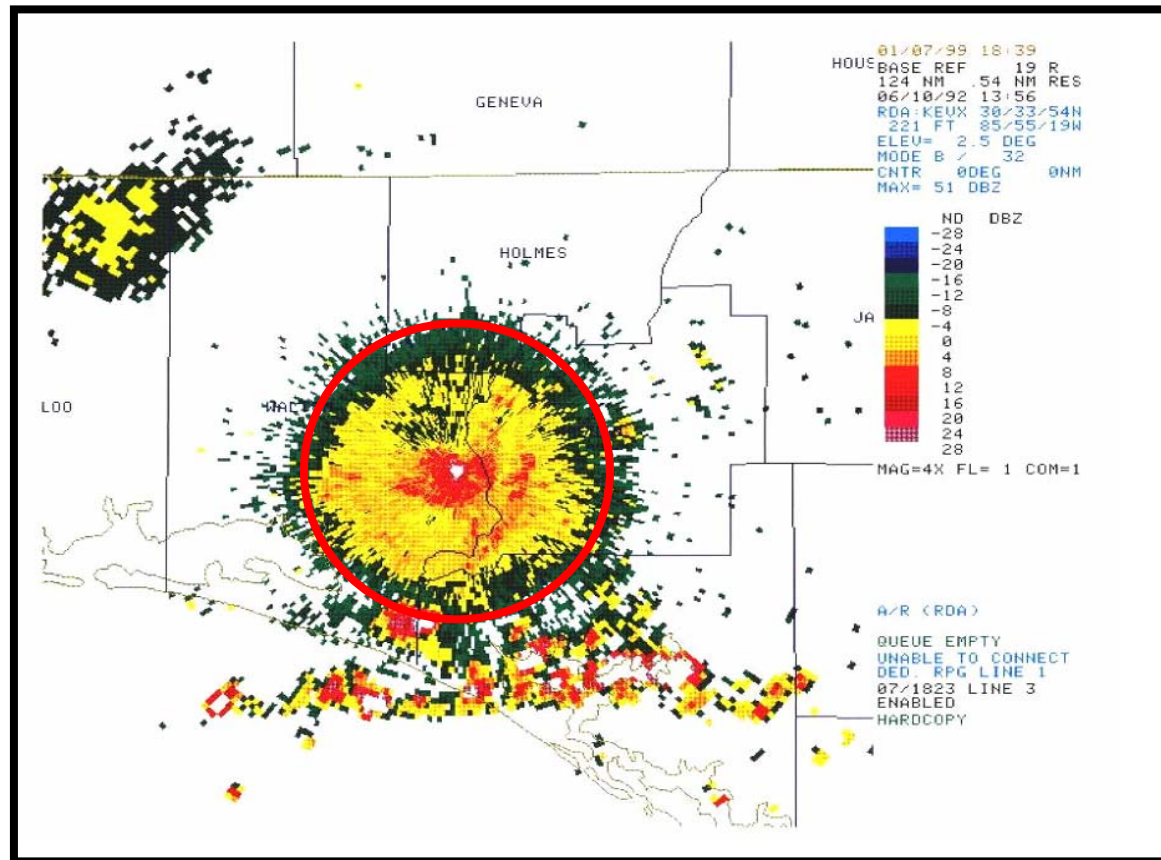




UNCLASSIFIED

## 25 OWS RADAR

- The surface based moist layer—underutilized



UNCLASSIFIED

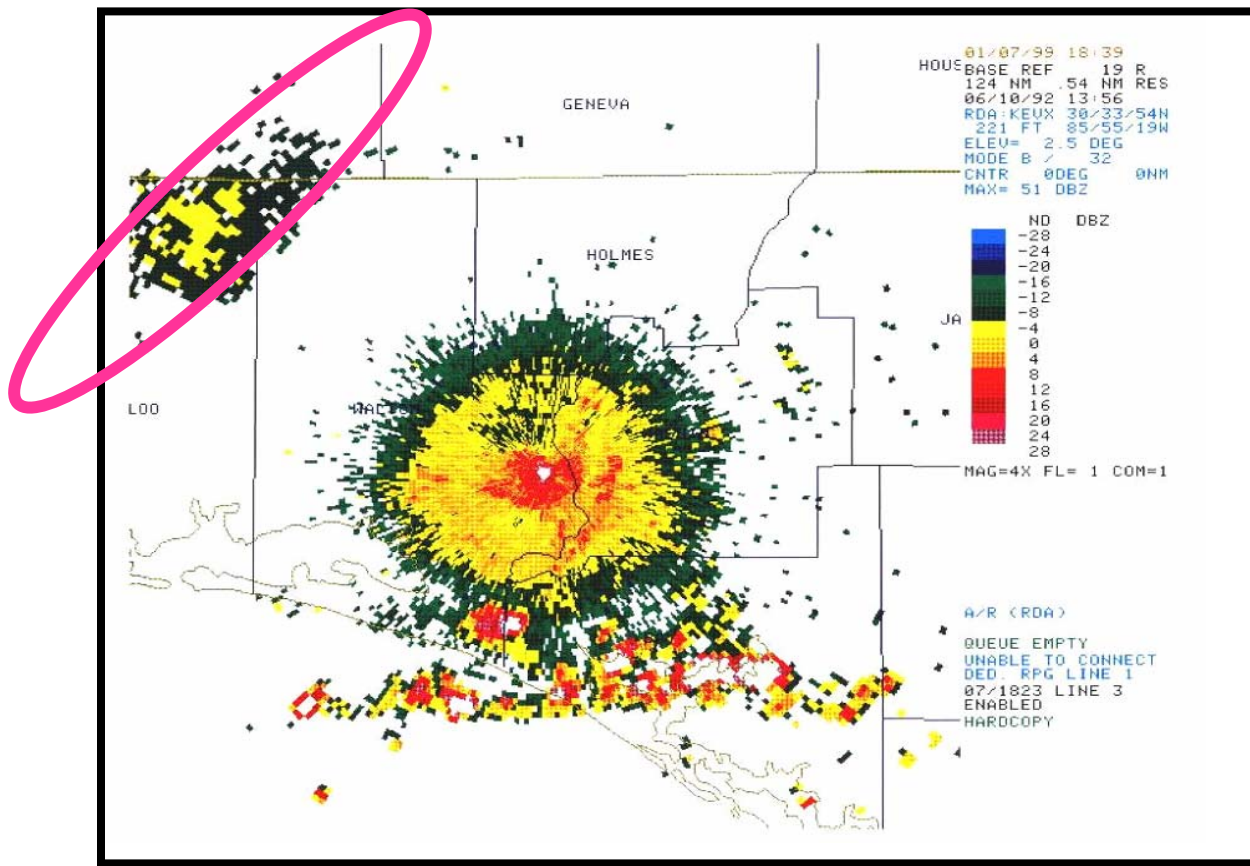
EXPLOIT WEATHER FOR VICTORY



UNCLASSIFIED

# 25 OWS RADAR

- The cloud layer 110-140—completely missed



UNCLASSIFIED

EXPLOIT WEATHER FOR VICTORY



UNCLASSIFIED

## 25 OWS RADAR

Questions?

UNCLASSIFIED

*EXPLOIT WEATHER FOR VICTORY*

