



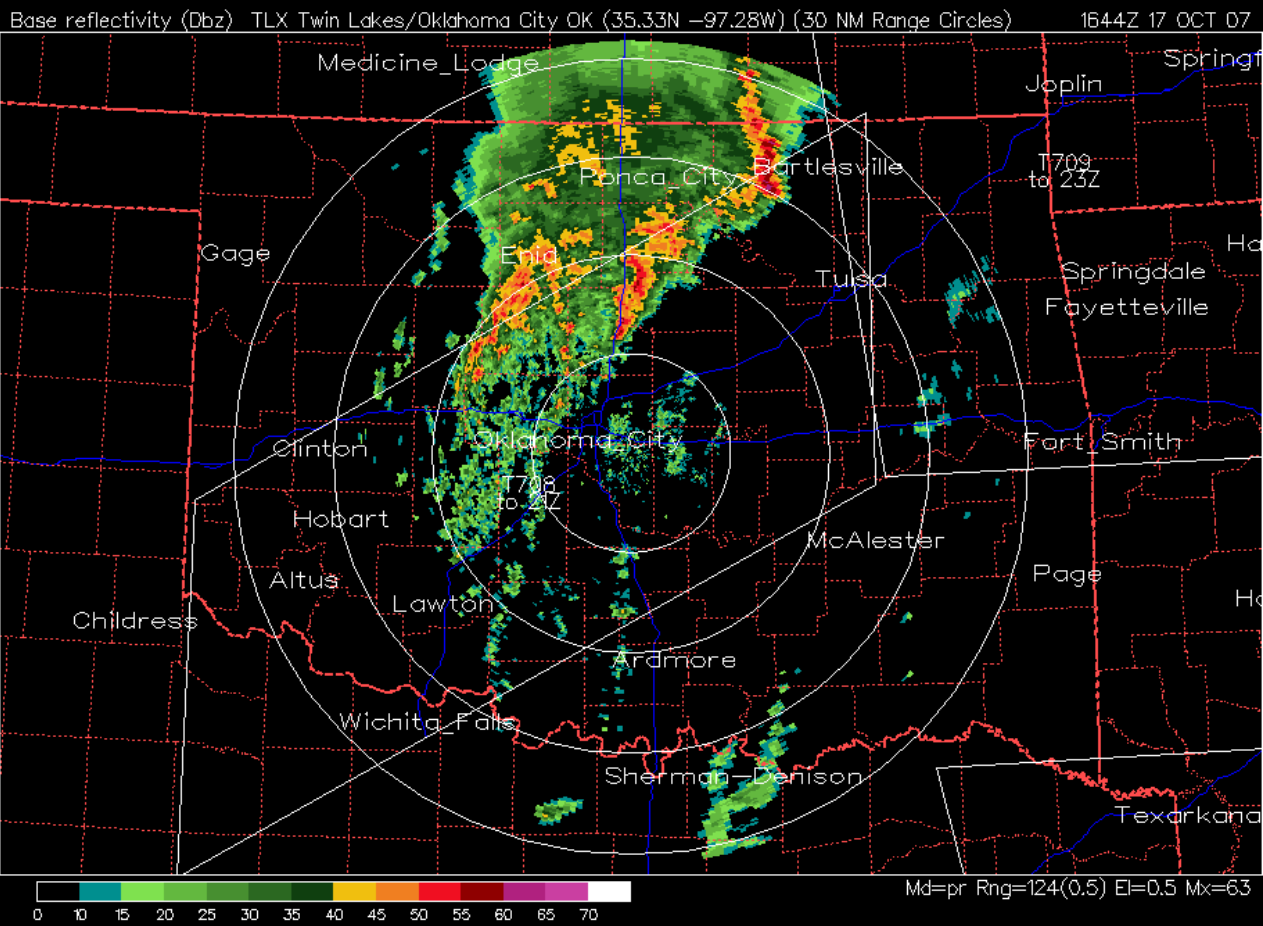
WSR-88D Level 2 Super-Res and Recombined Analysis

December 4, 2007

Mike Istok
Radar Meteorologist/Systems Engineer
NWS – Office of Science and Technology
Michael.Istok@noaa.gov

Build 10 KCRI Super-Res VCP Variety and Severe Storms

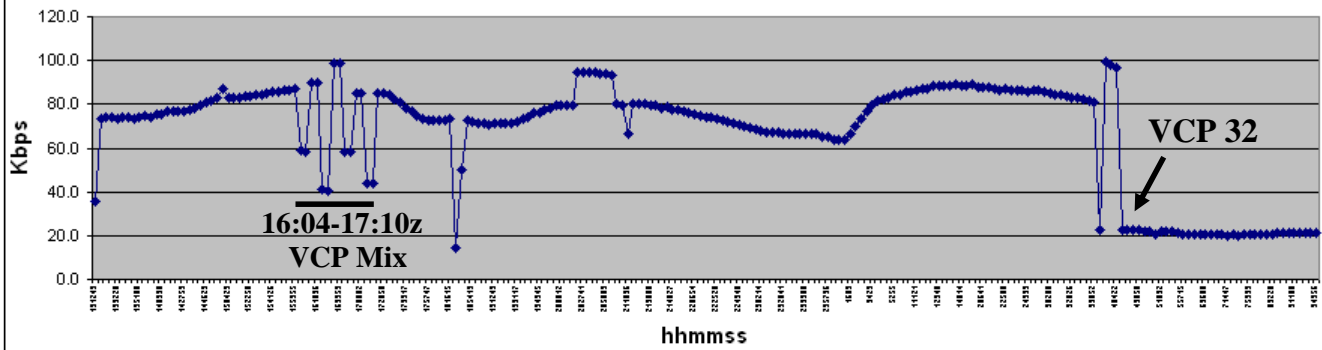
10/17-10/18 2007
Via LDM and playback



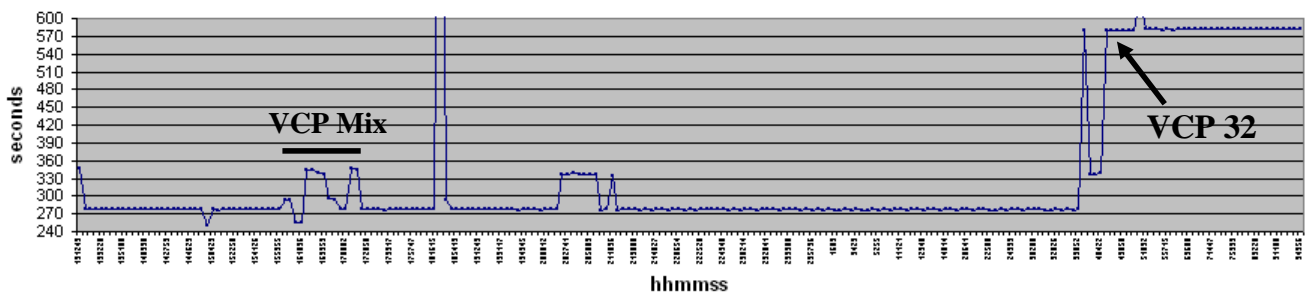
WSR-88D Build 10 Super-Res Level 2 Data Load Analysis

Slide 3

Oct. 17-18 LDM Level 2 Throughput



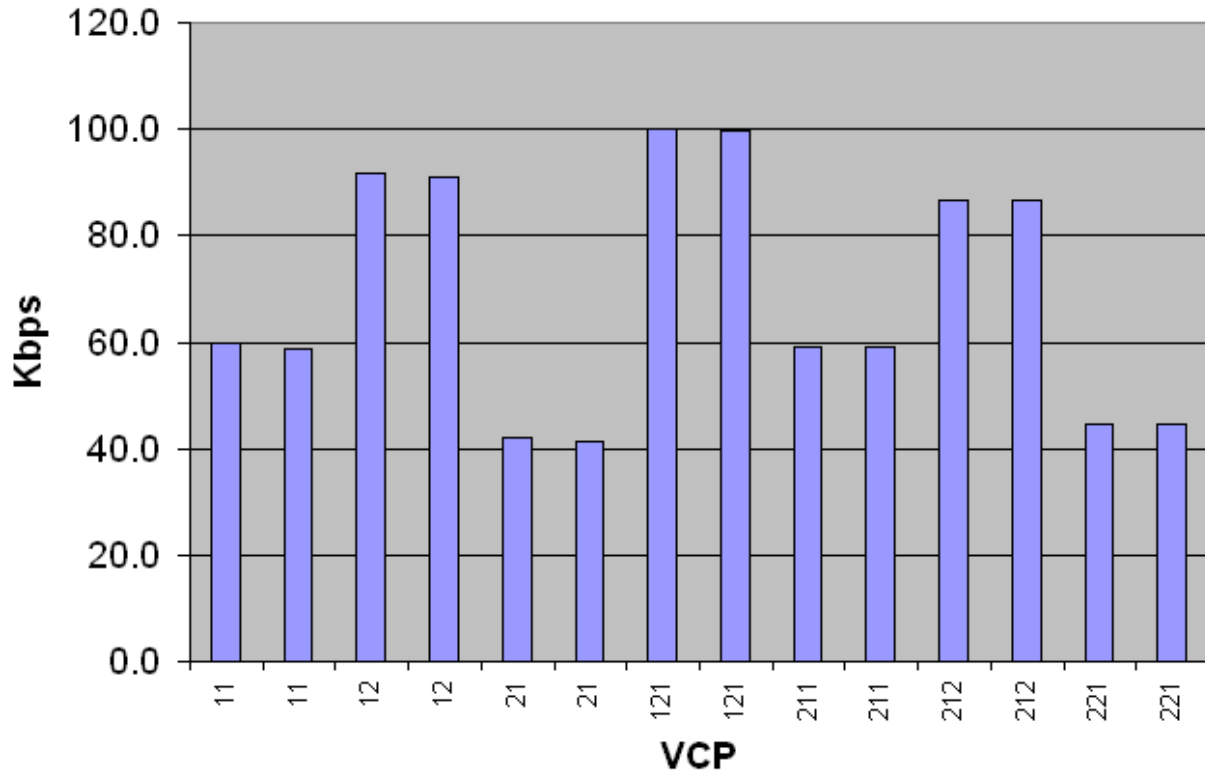
Oct. 17-18 VS Duration



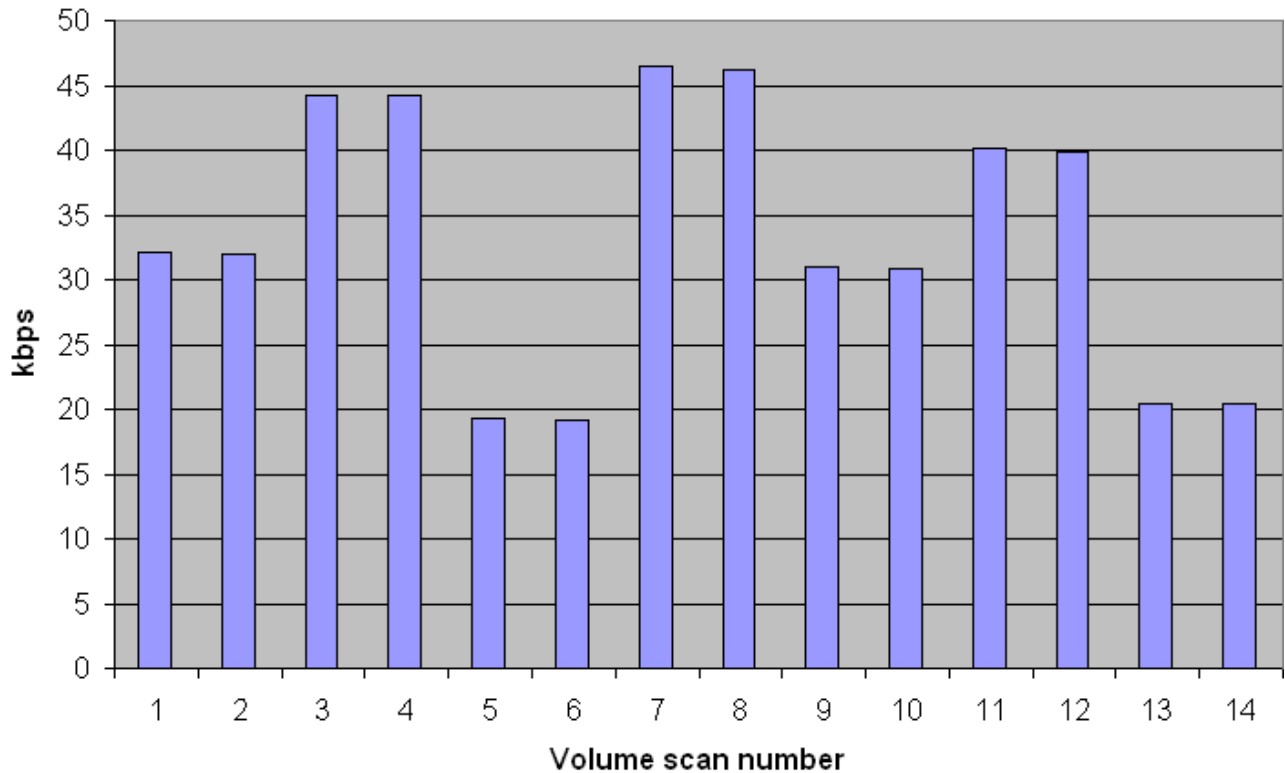
WSR-88D Build 10 Super-Res Level 2 Data Load Analysis

Slide 4

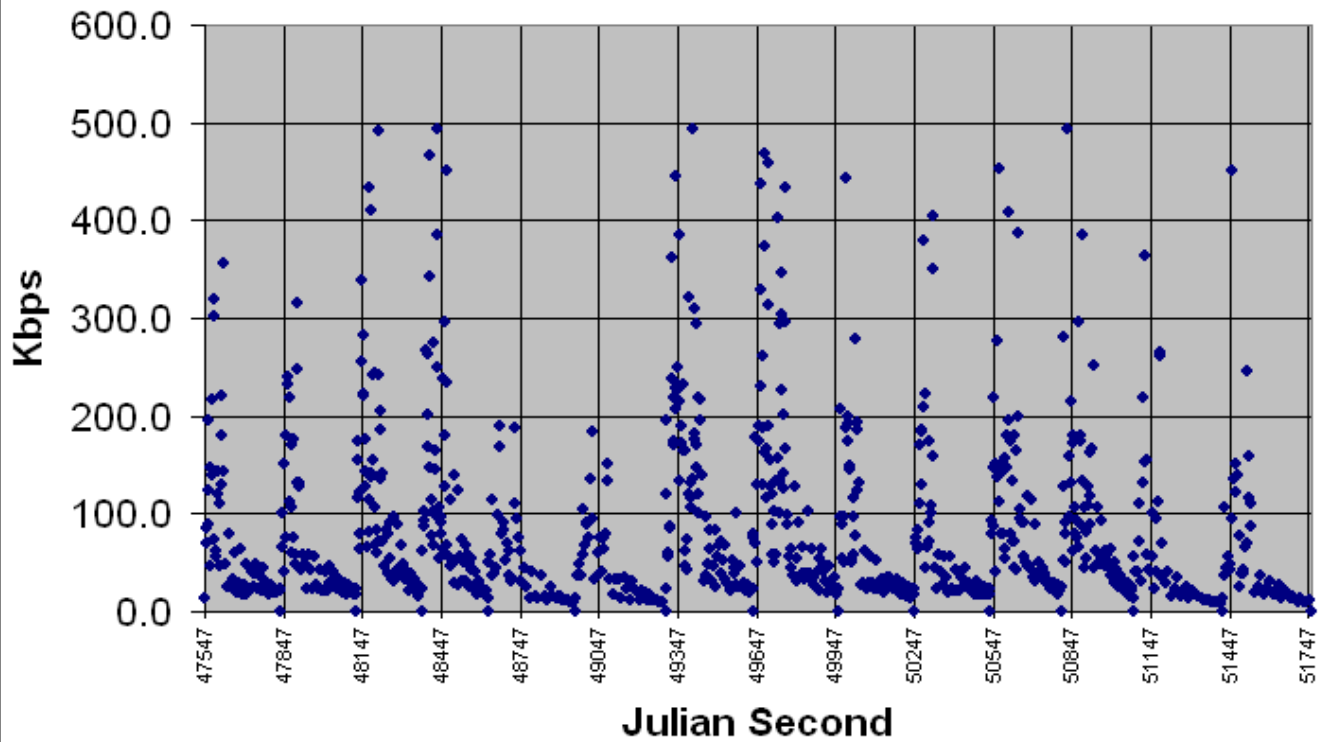
Super-Res Level 2 Volume Scan Throughput Oct.17, 2007 16:04 - 17:10Z 69Kbps Average



Recombined Level 2 Volume Scan Throughput Oct. 17, 2007 16:04-17:10 33Kbps Average



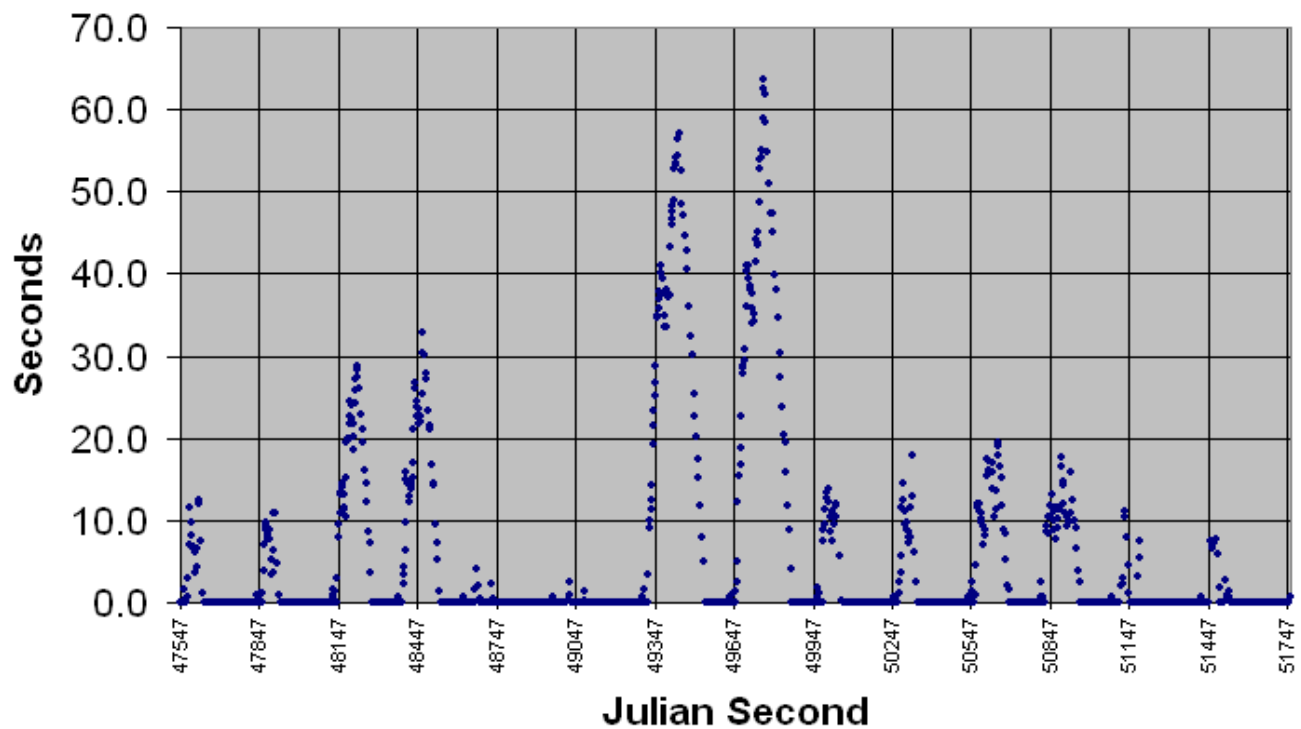
Super-Res Level 2 Uncapped Burst Rate Kbps Oct.17, 2007 16:04 - 17:10Z



WSR-88D Build 10 Super-Res Level 2 Data Load Analysis

Slide 7

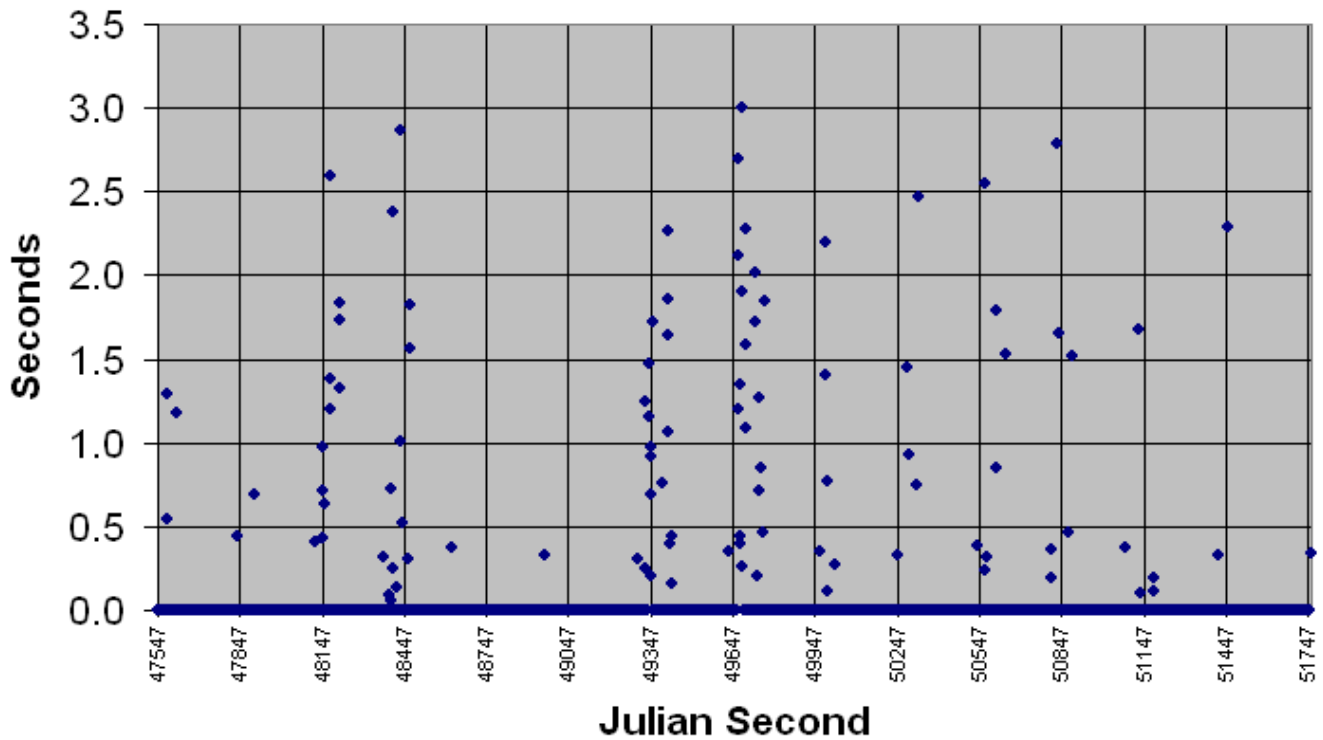
Super-Res Level 2 Backlog Latency Oct.17, 2007 16:04 - 17:10Z at 128 Kbps



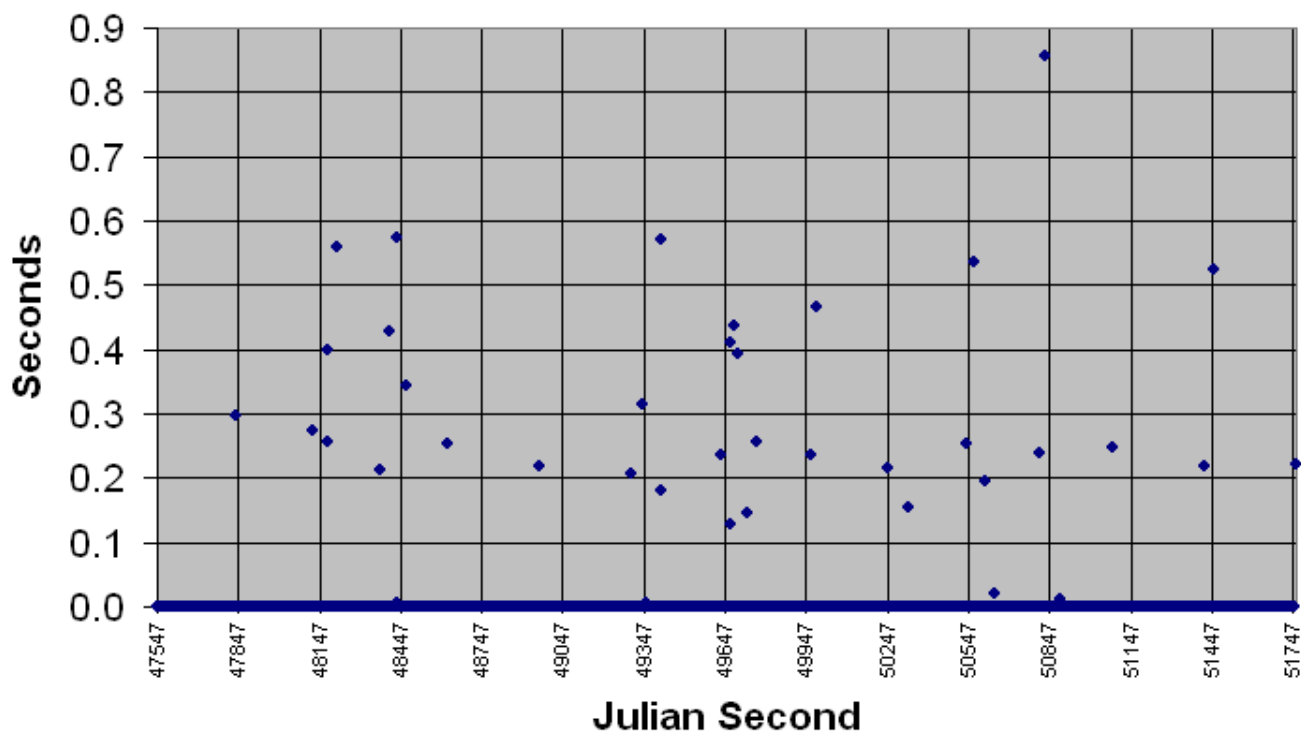
WSR-88D Build 10 Super-Res Level 2 Data Load Analysis

Slide 8

Super-Res Level 2 Backlog Latency Oct.17, 2007 16:04 - 17:10Z at 256 Kbps

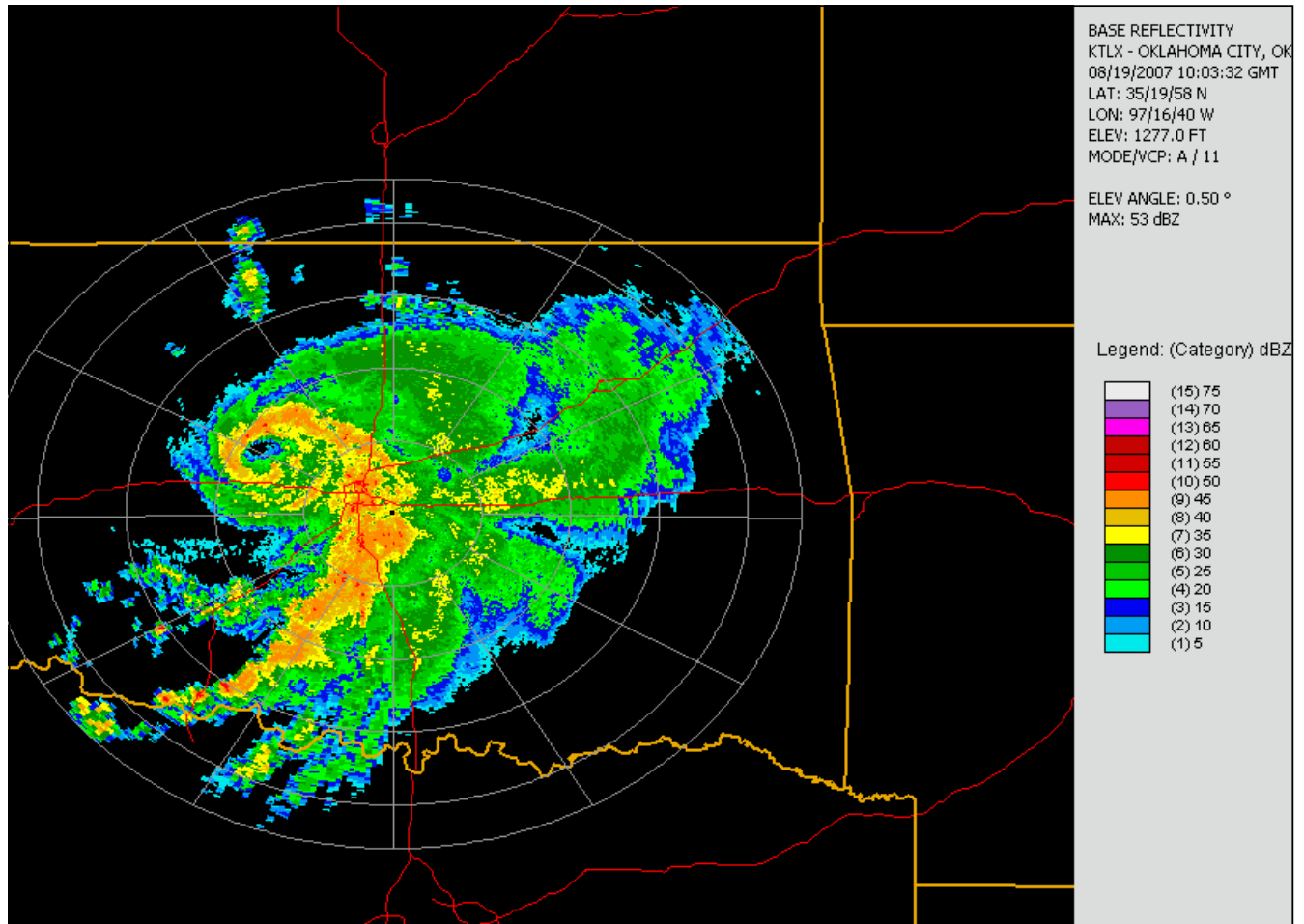


Super-Res Level 2 Backlog Latency Oct.17, 2007 16:04 - 17:10Z at 384 Kbps



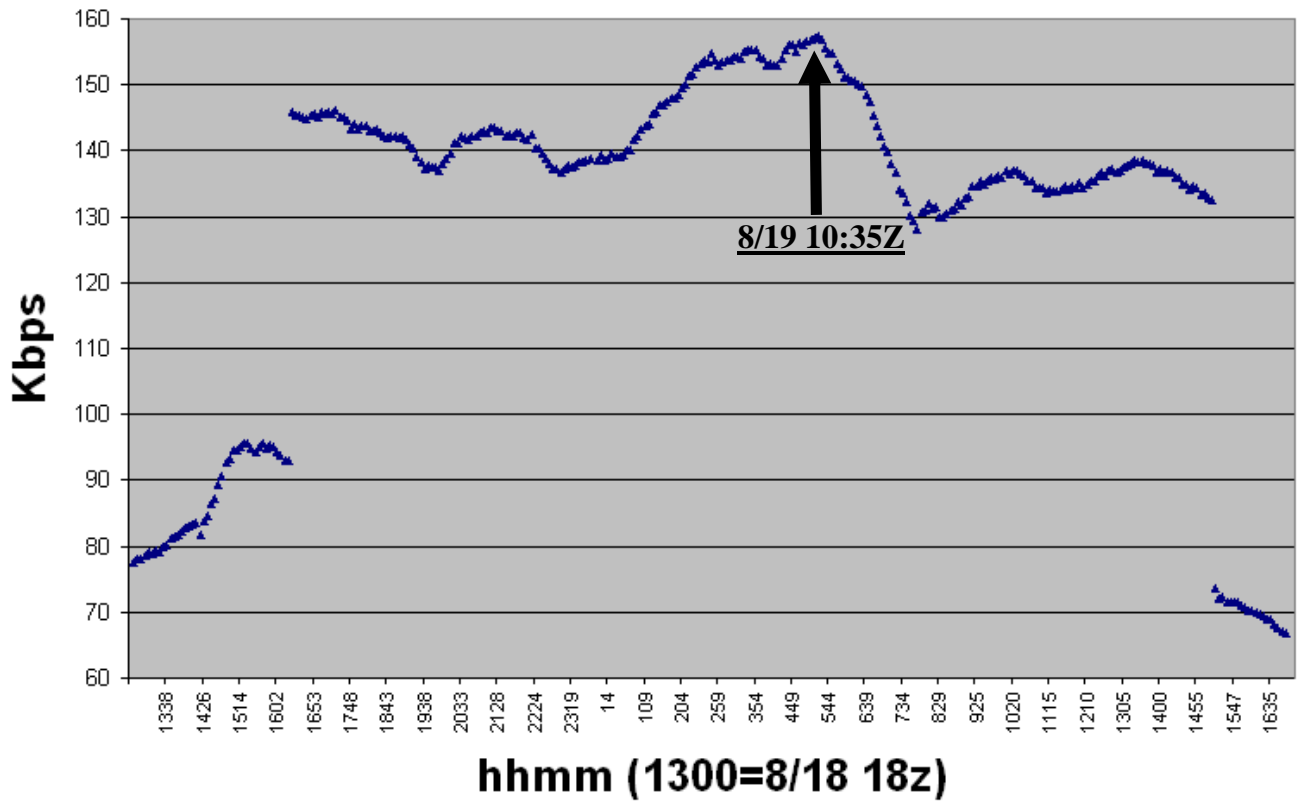
Build 10 KCRI Super-Res

Erin 8/18-8/19 2007
Via LDM and playback

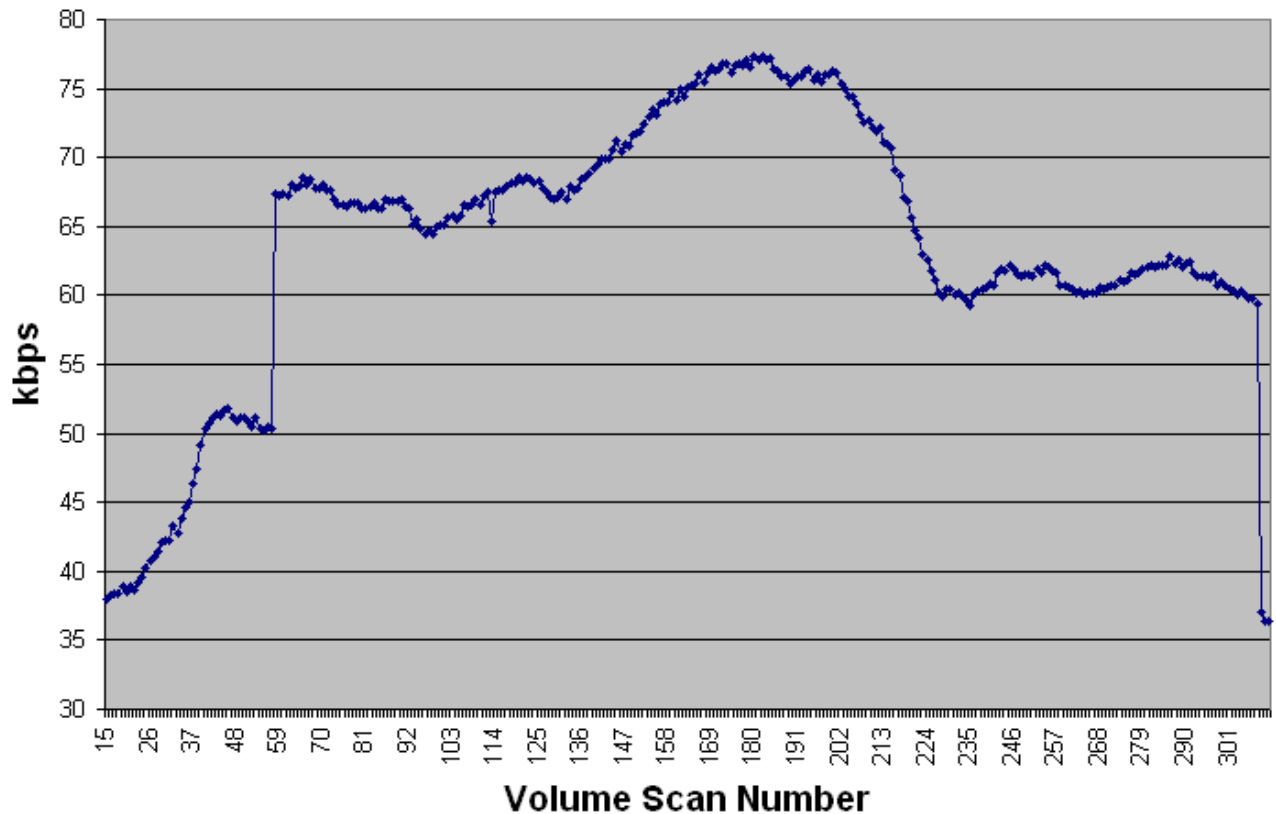


Volume Scan Throughput (VCP 11 & 121)

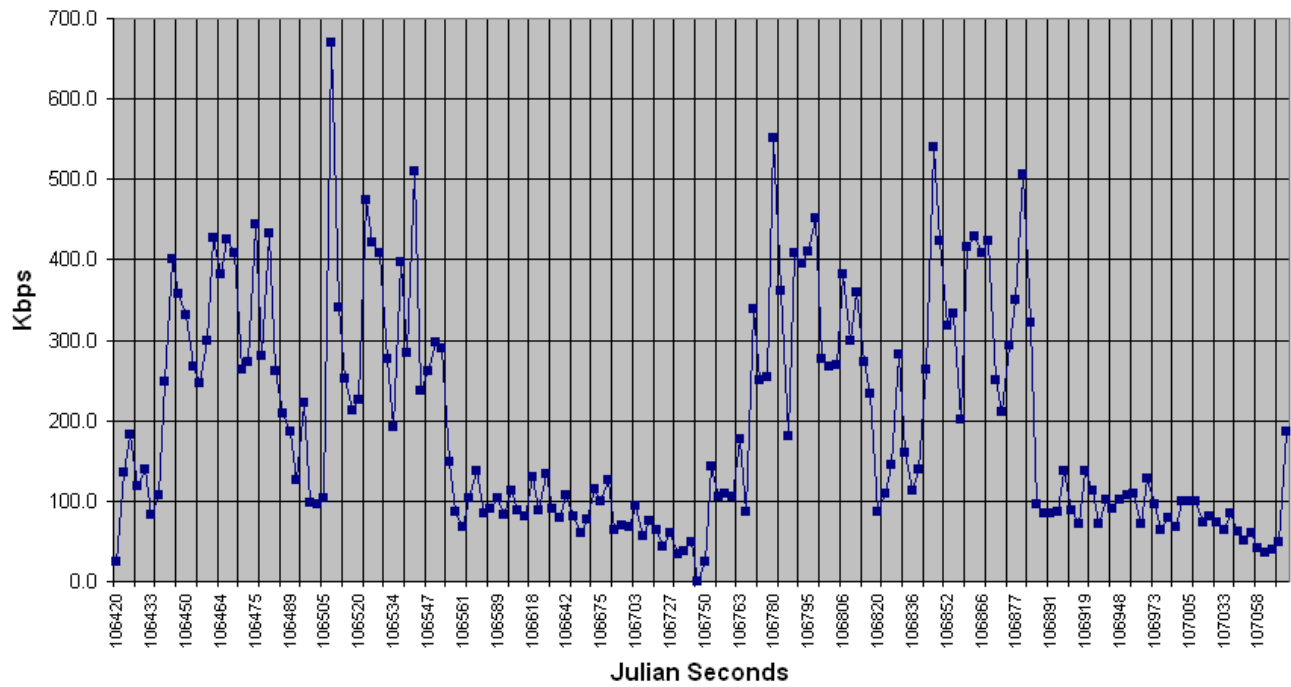
8/18 18:02Z to 8/19 22:30Z



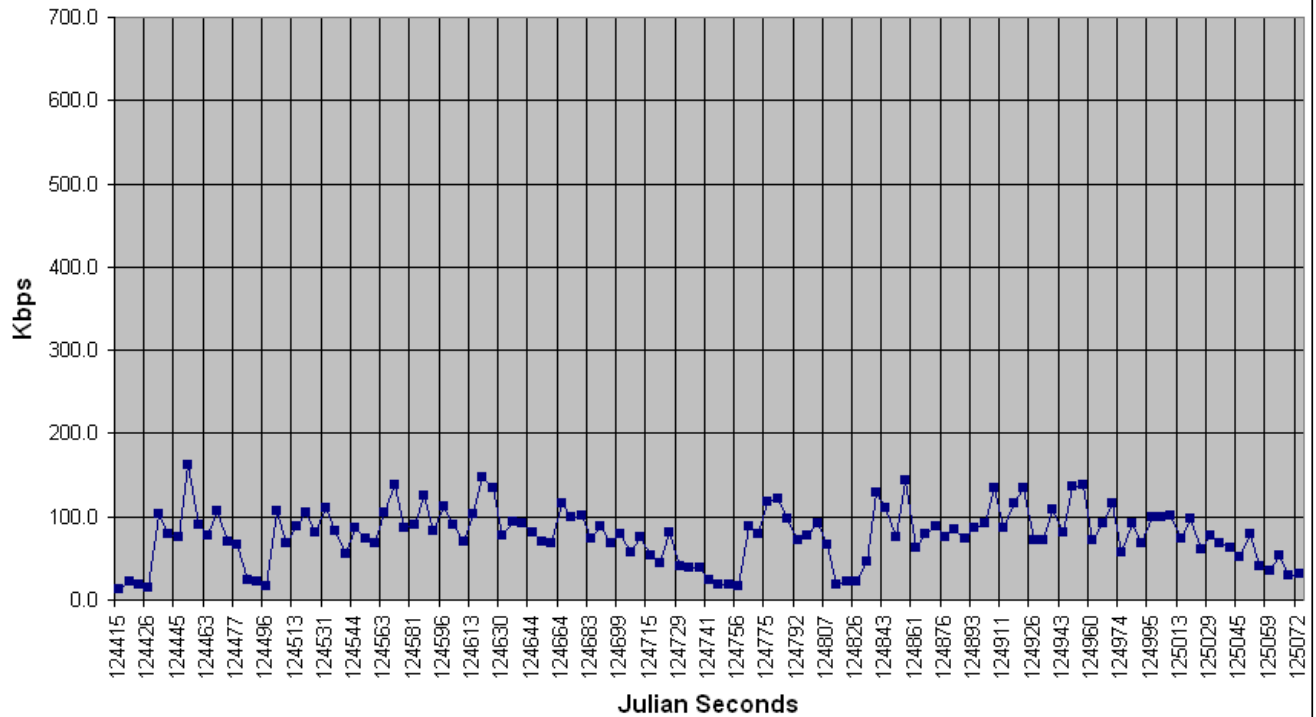
Recombined Volume Scan Throughput (VCP 11 & 121) 8/18 18Z to 8/19 21Z



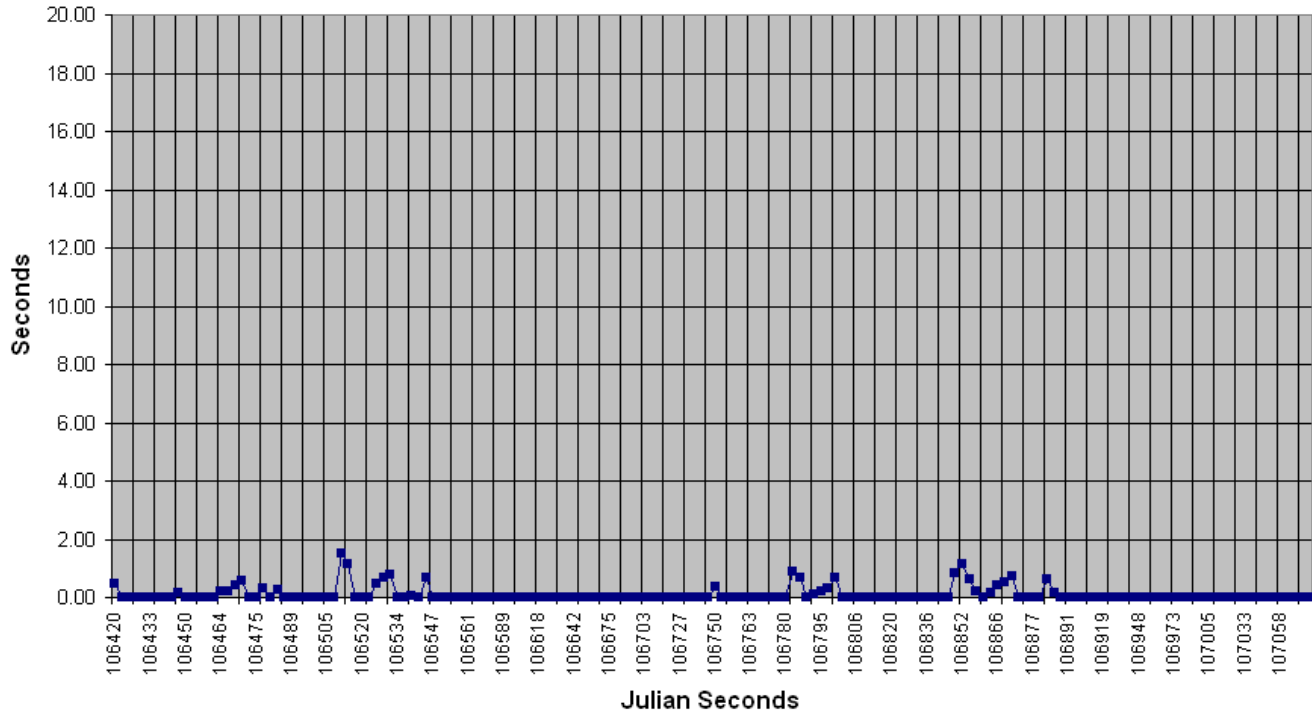
Super-Res Level 2 Uncapped Burst Rate 8/19 10:30Z



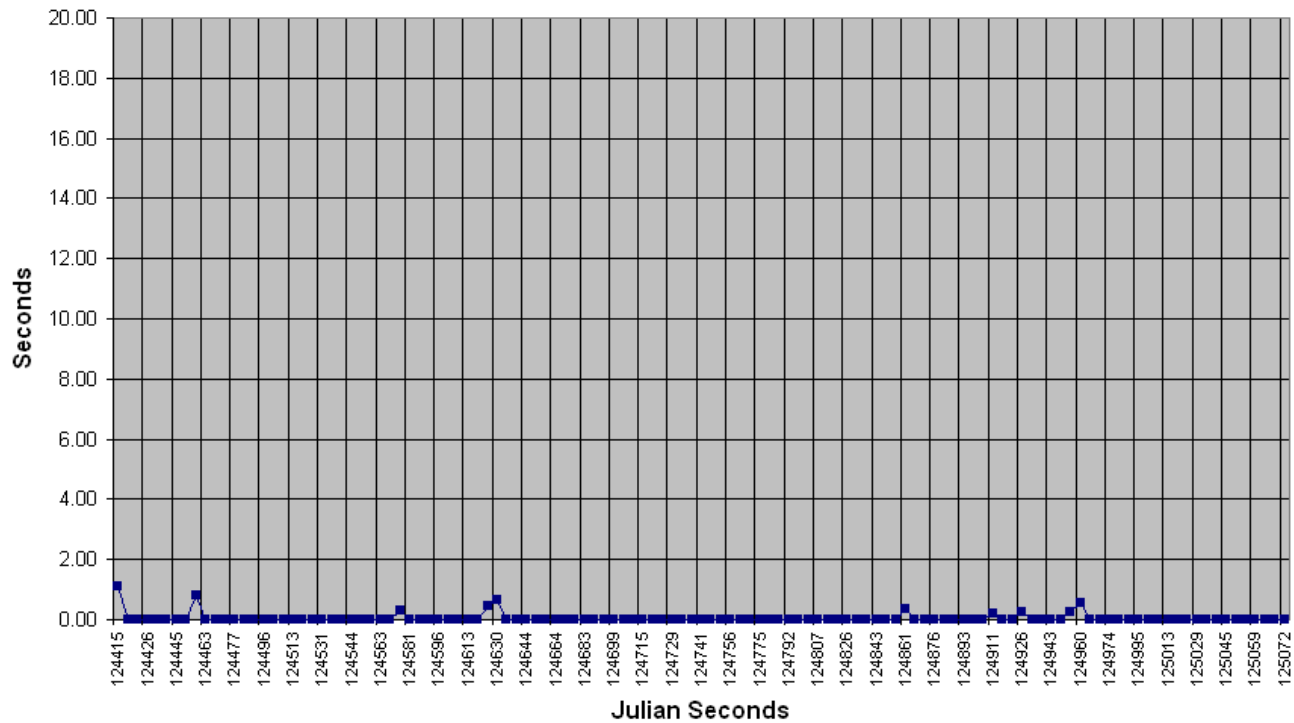
Recomb Level 2 Uncapped Burst Rate 8/19 10:30Z



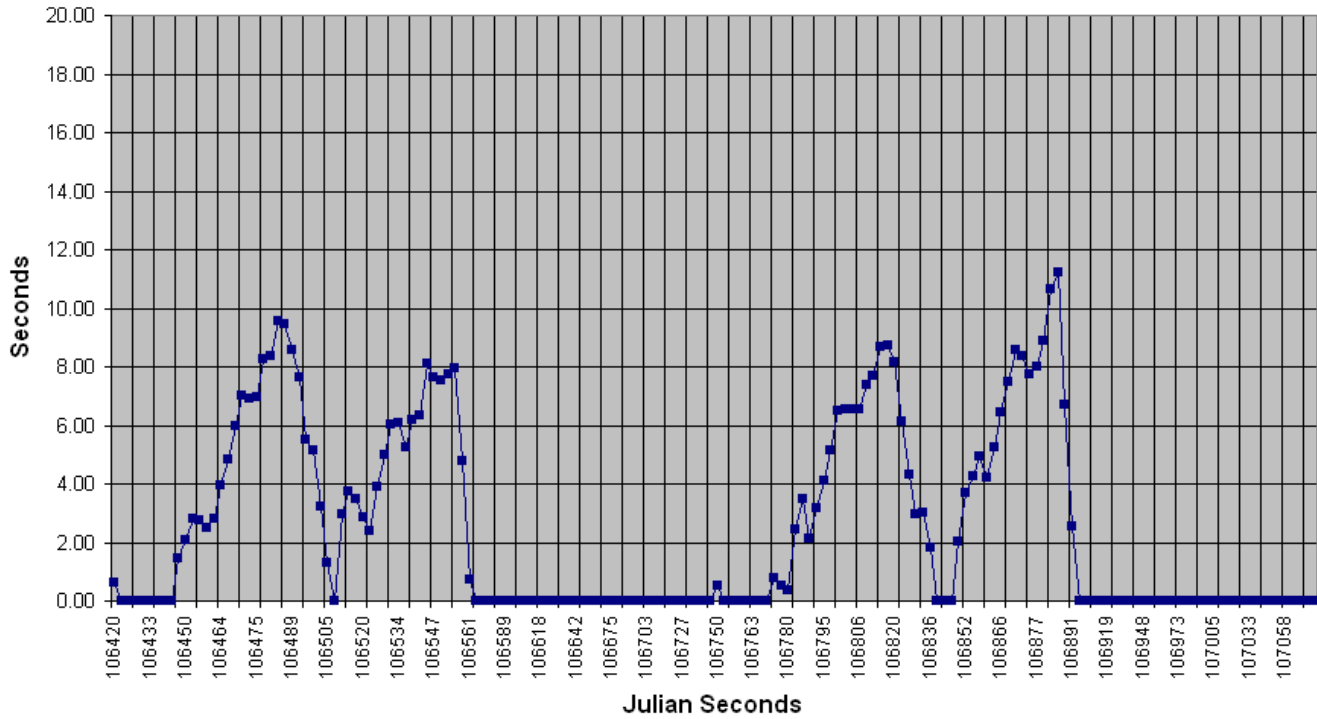
Super-Res Backlog Latency @ 384 Kbps 8/19 10:30Z



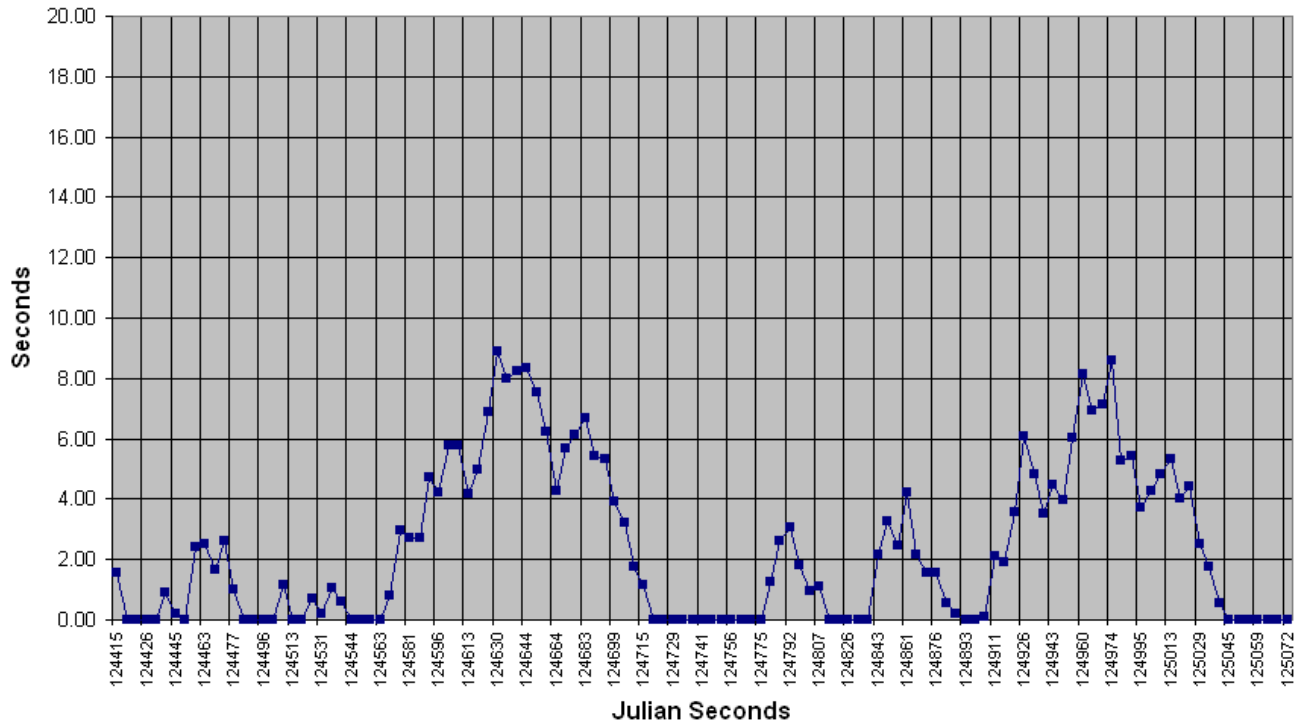
Recomb Backlog Latency @ 128 Kbps 8/19 10:30Z



Super-Res Backlog Latency @ 270 Kbps 8/19 10:30Z

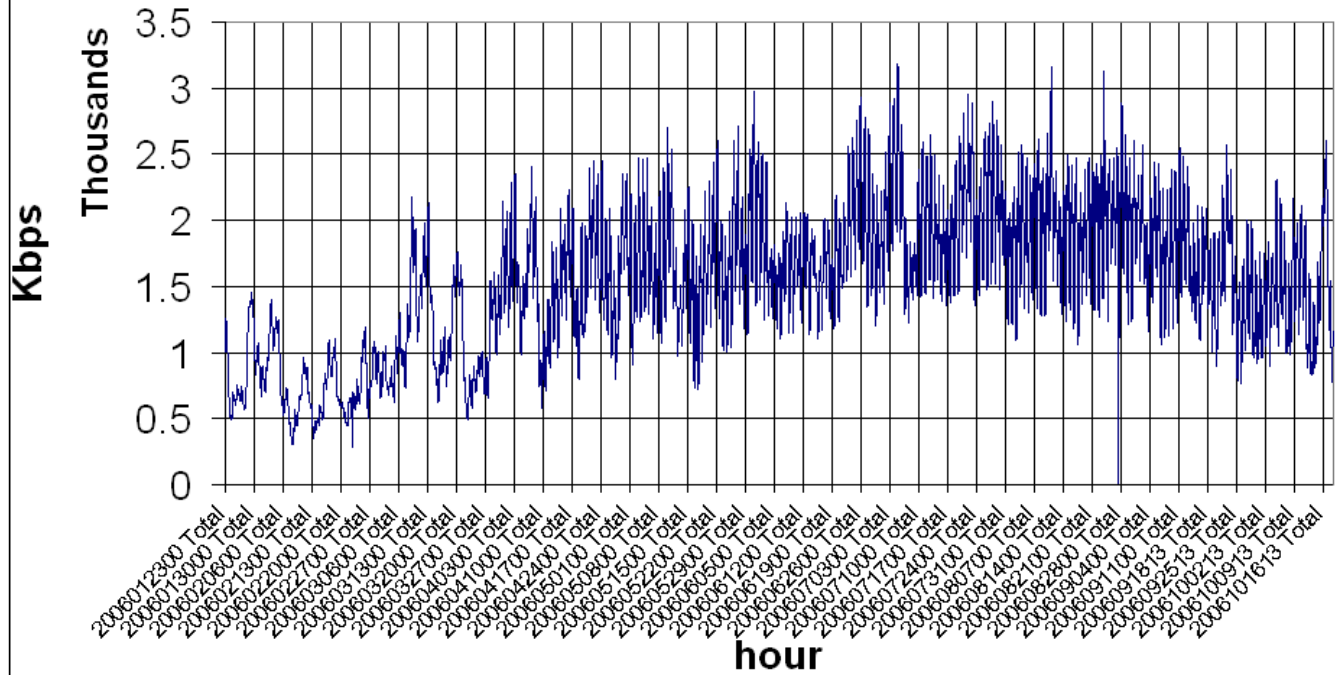


Recomb Backlog Latency @ 90 Kbps 8/19 10:30Z



January 23 - October 18, 2006

Level 2 Collection Total Network Comms Load



October 1, 2006 - October 31, 2007

Level 2 Collection Total Network Throughput

